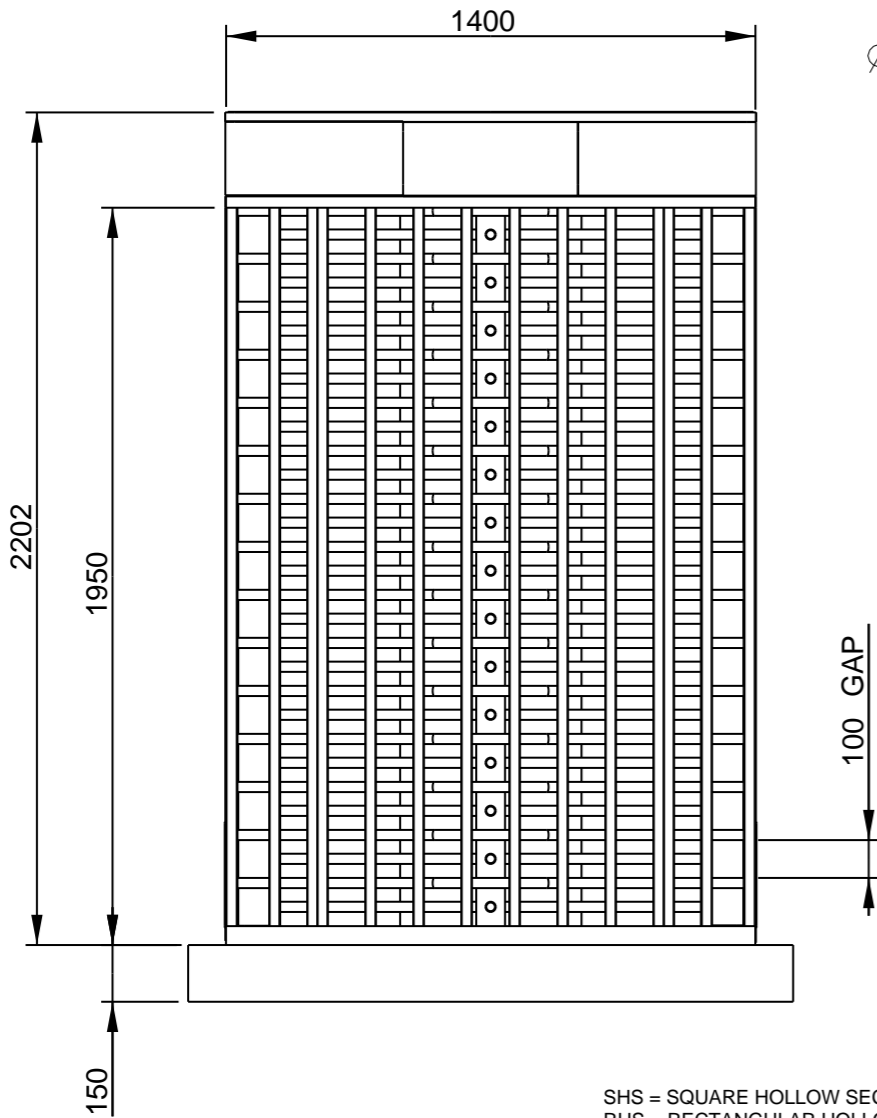
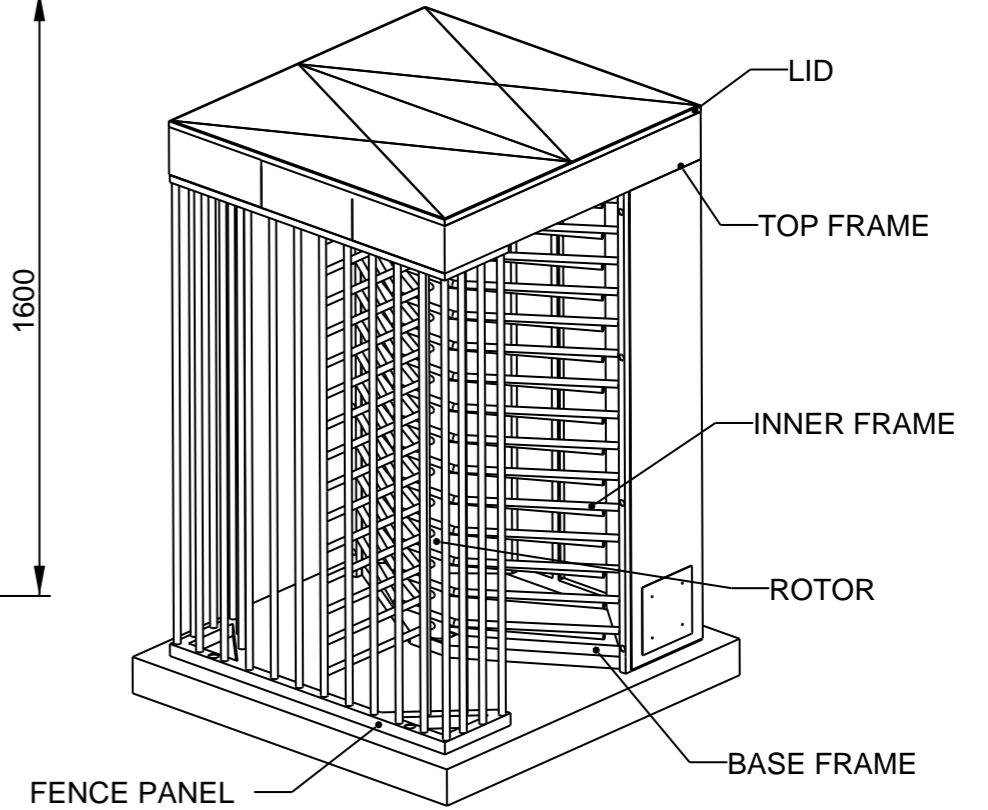
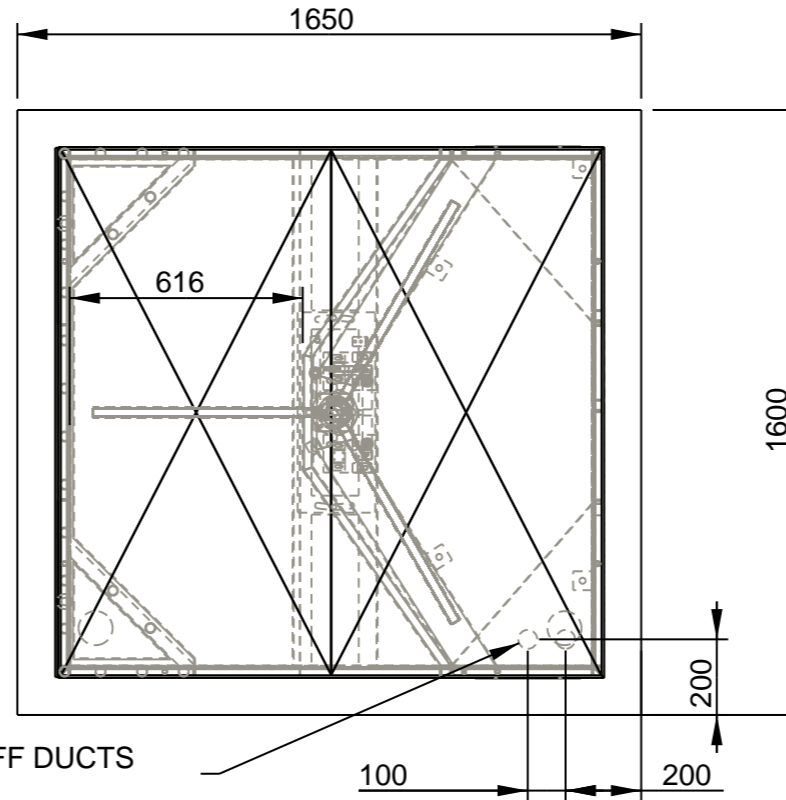
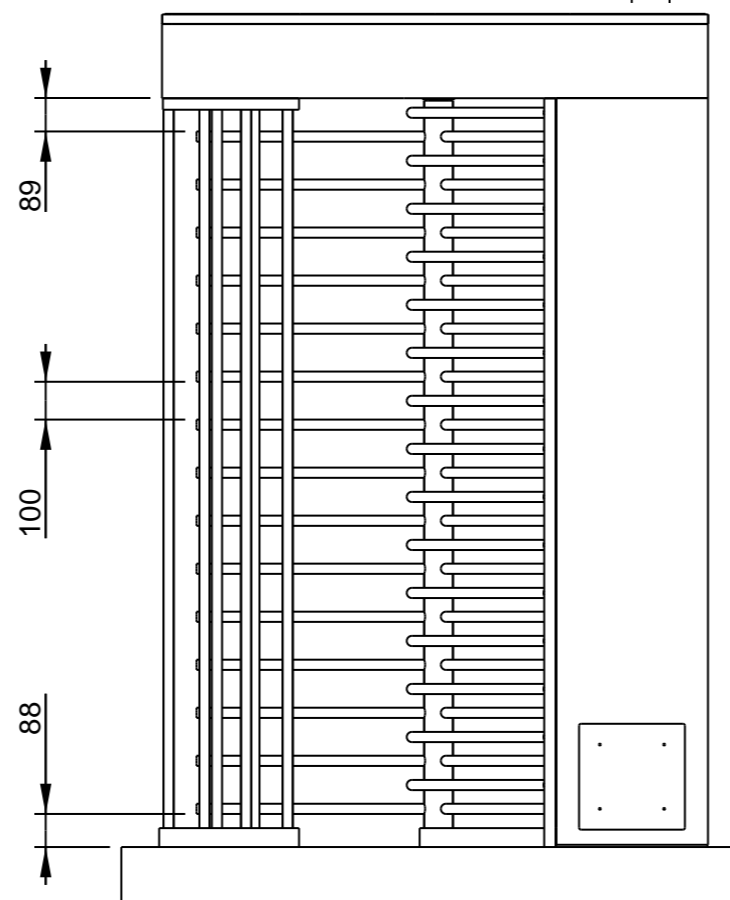


CABLE BOX	TS120_1_09	1	
CLADDING	TS120_1_08	1	
LID	TS120_1_07	1	
FENCE PANEL	TS120_1_06	1	
TOP FRAME	TS120_1_05	1	
ROTOR	TS120_1_04	1	
INNER PANEL	TS120_1_03	1	
BASE FRAME	TS120_1_02	1	
ROTARY BLOCK	TS120_1_01	1	
DESCRIPTION	DRAWING	QTY	



Ø 50 2 OFF DUCTS



MATERIALS:

BASE FRAME:
30x30x3 SHS, 50x30x3 RHS, 100x50x3 RHS

INNER FRAME:
30x30x3 SHS, 26.9x2 CHS

ROTOR:
Ø 76.1x3 CHS, Ø 26.9x2 CHS

TOP FRAME:
50x50x3 RSA, 30x30x3 SHS, 25x25x2 SHS

FENCE PANEL:
30x30x3 SHS, 50x50x3 SHS, Ø 26.9x2 CHS

LID:
25x2 SHS

CLADDING: 1.6mm GALVANISED SHEET

NOTES:
WELD PRACTICES TO BE
IN ACCORDANCE WITH
QMS 7.5.2/7.5.3



Avon Barrier Company Ltd.
Nova House
195 South Liberty Lane
Ashton Vale Trading Estate
Bristol BS3 2UU
Tel: (44) (0117) 953 5252
Fax: (44) (0117) 953 5373
E-mail: MECHANICAL @AVON-BARRIER.CO.UK

Drawing Title
**120 ° TURNSTILE
G.A. +
FOUNDATION
DETAILS**

A	NEW	M.J	15/8/06	Drawn	Traced	Checked	Approved	Date
ISSUE	REVISION	SIG.	DATE	M.J		PhJ		8/06

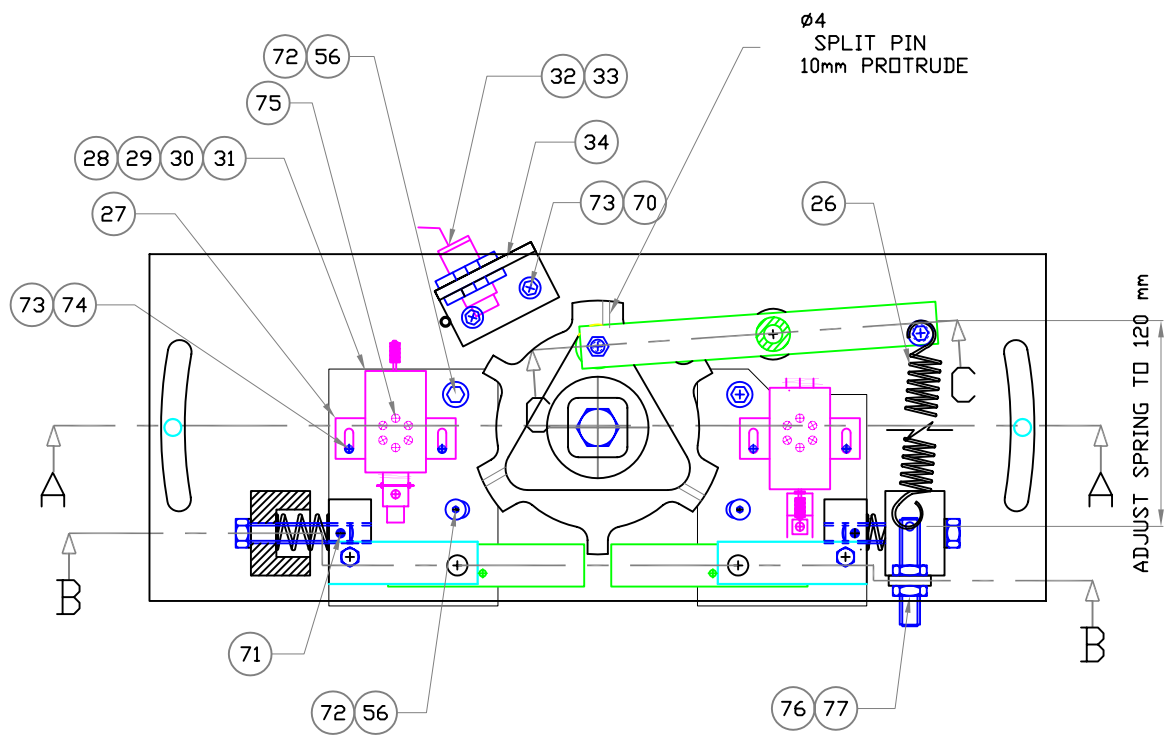
SHS = SQUARE HOLLOW SECTION
RHS = RECTANGULAR HOLLOW SECTION
RSA = RECTANGULAR STEEL ANGLE
CHS = CIRCULAR HOLLOW SECTION

IF IN DOUBT ASK

3rd ANGLE PROJECTION

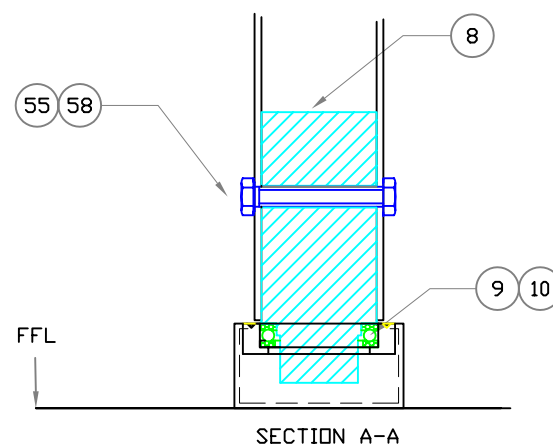
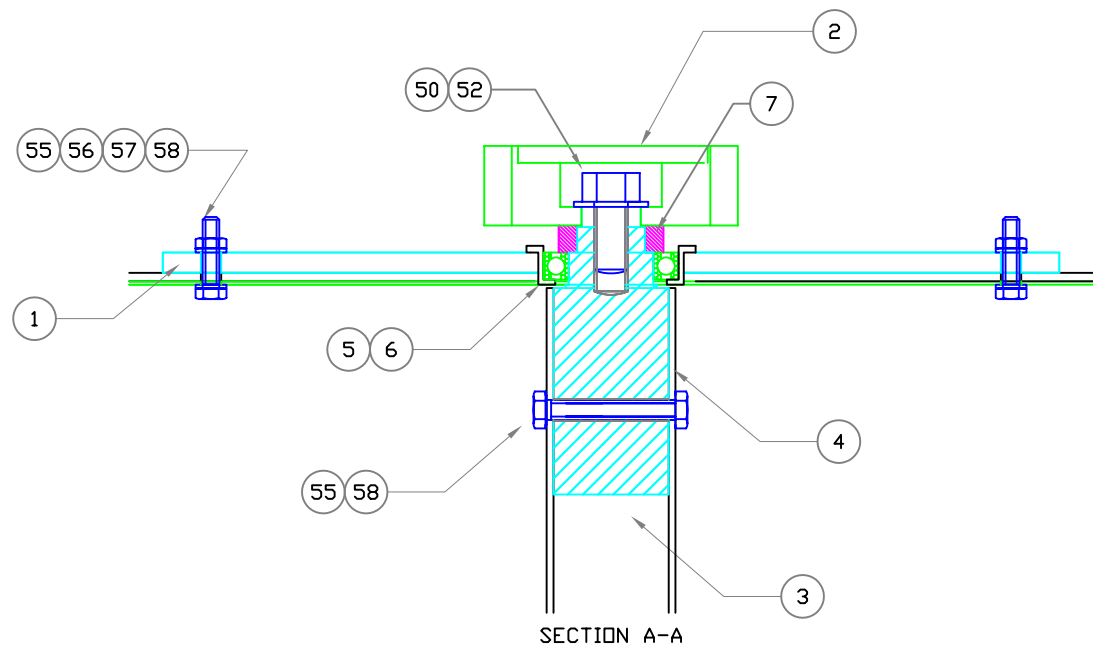
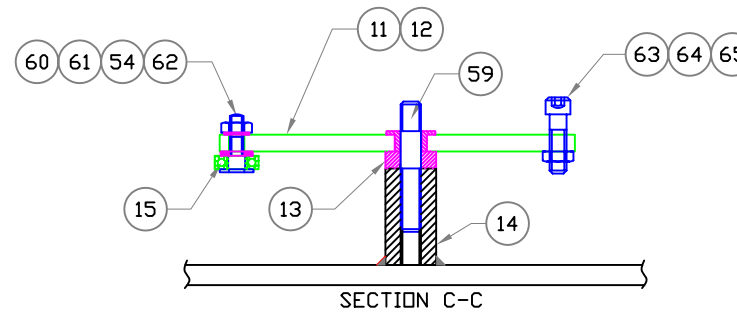
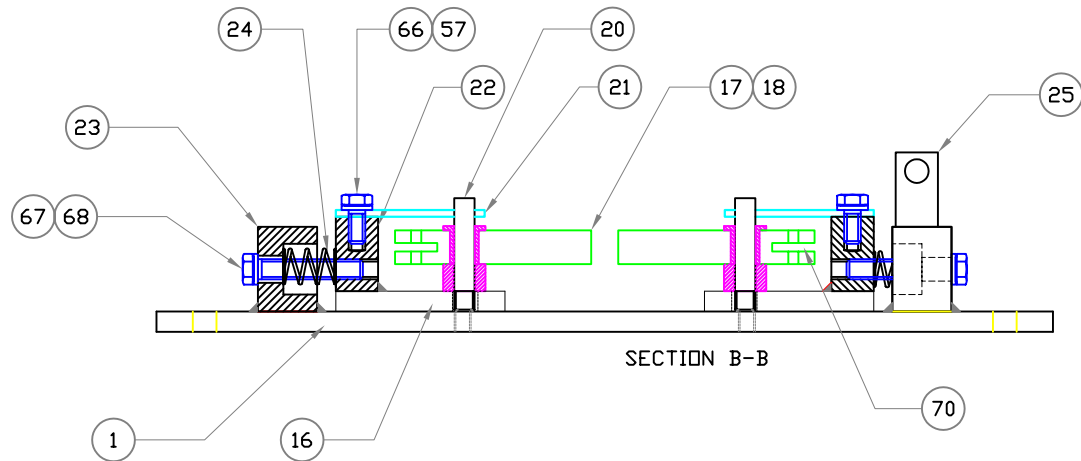
COMPUTER GENERATED
DO NOT ALTER BY HAND

Tolerances	Used on	Drawing No.		
±0.3 UNLESS STATED	TS120	TS120_100		
Material	Finish	Scale	Sht.	of
M.S.	GALVANISED & POWDER COAT		1	1
				Rev.
				A



ITEM	DESCRIPTION	QTY.	PARTS
1.	BASE PLATE	1	REF. DRG. TSSTD-1-03
2.	ROTARY BLOCK	1	REF. DWG TS120-1-01 / TS090-1-01
3.	UPPER SHAFT	1	REF. DRG. TSSTD-1-01
4.	ROTOR SHAFT	1	REF. TS120-1-04
5.	UPPER BEARING	1	NO : 2850784 (WAS 6010.2ZR FAG)
6.	UPPER BEARING HOUSING	1	REF. DRG. TSSTD-1-01
7.	SPACER	1	REF. DRG. TSSTD-1-04
8.	LOWER SHAFT	1	REF. DRG. TSSTD-1-02
9.	LOWER BEARING	1	NO : 51110 FAG
10.	LOWER BRG. HOUSING	1	REF. DRG. TSSTD-1-02
11.	ROCKER ARM	1	REF. DRG. TSSTD-1-05
12.	BUSH	1	REF. DRG. TSSTD-1-05
13.	SPACER	1	REF. DRG. TSSTD-1-06
14.	MOUNTING BLOCK	1	REF. DRG. TSSTD-1-06
15.	BEARING	1	NO : 6000
16.	PLATE	2	REF. DRG. TSSTD-1-07
17.	LOCKING BAR	2	REF. DRG. TSSTD-1-08
18.	BUSH	2	REF. DRG. TSSTD-1-08
19.	SPACER	2	REF. DRG. TSSTD-1-09
20.	PIVOT PIN	2	REF. DRG. TSSTD-1-09
21.	SUPPORT PLATE	2	REF. DRG. TSSTD-1-10
22.	BLOCK	2	REF. DRG. TSSTD-1-11
23.	BLOCK	2	REF. DRG. TSSTD-1-12
24.	SPRING (COMPRESSION)	2	DL = 37mm, D.D = 19.1, WIRE Ø = 2.95mm
25.	SPRING PLATE	2	REF. DRG. TSSTD-1-13
26.	SPRING (TENSION)	1	DL = 110mm, D.D = 19.1, WIRE Ø = 2.95mm
27.	SOLENOID BRACKET	2	REF. DRG. TSSTD-1-20
28,29,30,31	SOLENOID ASSEMBLY	2	
32,33.	PROXIMITY SWITCH ASSY.	1	

50.	HEX BOLT	1	M20 x 40
52.	WASHER	1	REF. DRG. TSSTD-1-14
53.	HEX BOLT	4	M8 x 15
54.	WASHER	5	Ø8, FORM A
55.	HEX BOLT	10	M10 x 40
56.	WASHER	8	Ø 10, FORM B
57.	SPRING WASHER	6	Ø 10
58.	HEX NUT	10	M10
59.	STUD	1	M12
60.	PIN	1	REF. DRG. TSSTD-1-15
61.	WASHER	1	Ø8, FORM B
62.	HEX NUT	1	M8, NYLOC
63.	SOCKET HEAD BOLT	1	M10 x 35
64.	BUSH	1	REF. DRG. TSSTD-1-16
65.	HEX NUT	1	M10 , NYLOC
66.	HEX BOLT	2	M10 x 25
67.	HEX BOLT	2	M12 x 65
68.	WASHER	2	Ø12, FORM B
70.	SOLENOID ADAPTOR PLATE	2	TSSTD-1-19
71.	GRUB SCREW	2	M6 x 20
72.	SOCKET HEAD BOLT	4	M10 x 25
73.	PAN HEAD BOLT	6	M4 x 6
74.	WASHER	4	Ø6, FORM A
75.	COUNTER SUNK SCREW	4	M5 x 10
76.	STUD	1	M12 x 65, Ø3.5 HOLE
77.	HEX NUT	2	M12
ROTARY BLOCK			
		1	TS090-1-01 OR TS120-1-01
BEARINGS - RS BRISTOL TEL: 9541161		51110 ID50 OD70 2868577	
		ID50 OD80 20DEEP 2850784 (WAS 6010 RS 4090934)	



IF IN DOUBT ASK	3rd ANGLE PROJECTION	Tolerances		Used on		Drawing No.				
	COMPUTER GENERATED DO NOT ALTER BY HAND	Material SECTION D-D		Finish		TSSTD-6-01				
		Material SECTION D-D		Finish		Scale	Sht.	of	Rev.	
						NTS	1	1	C	



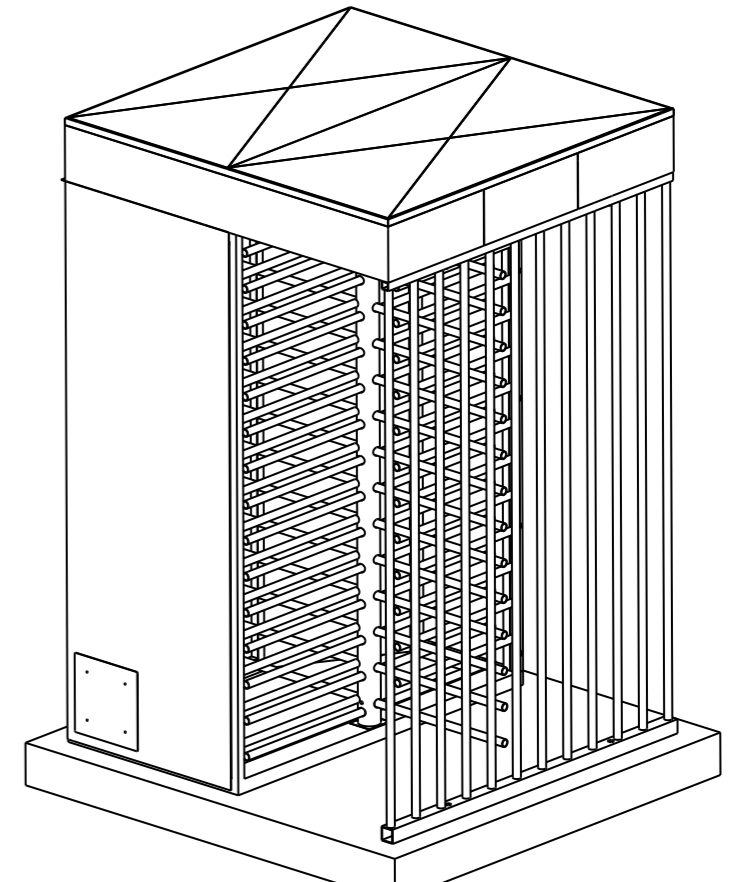
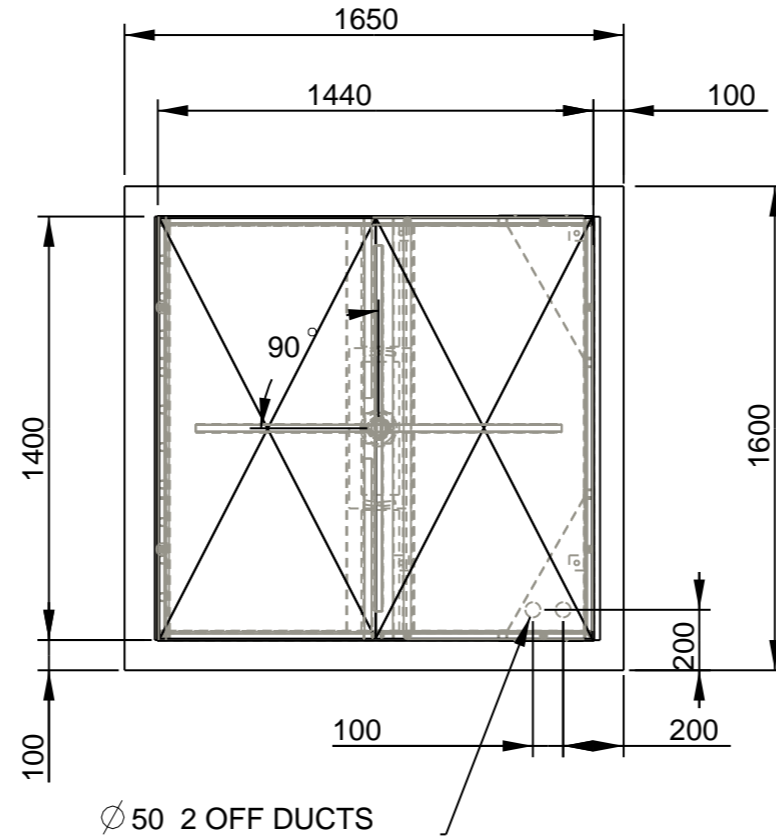
Avon Barrier Company Ltd.
Nova House
195 South Liberty Lane
Ashton Vale Trading Estate
Bristol BS3 2UU
Tel: (44) (0117) 953 5252
Fax: (44) (0117) 953 5373
E-mail: TECHNICAL@AVON-BARRIER.CO.UK

Drawing Title
90° AND 120° TURNSTILE
BEARING DETAILS
AND HEAD ASSEMBLY

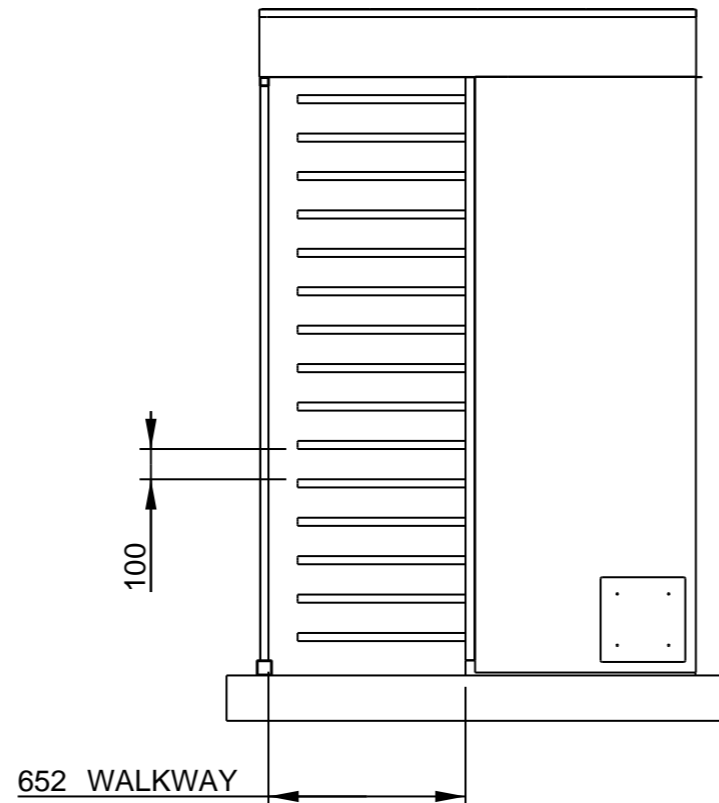
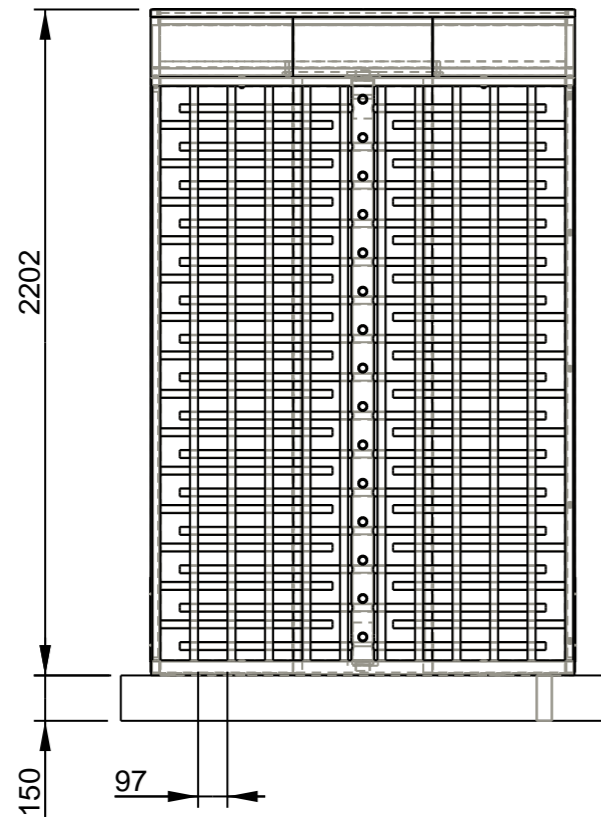
C	AS PER BUILD	SE	11/1/05	Drawn	Traced	Checked	Approved	Date
B	LIST UPDATED, LWR BEAR SHAFT INCR	SE	5/6/03	MP				25/6/02
ISSUE	REVISION	SIG.	DATE					

Tolerances		Used on		Drawing No.			
Material SECTION D-D		Finish		TSSTD-6-01			
Scale	Sht.	of	Rev.				
NTS	1	1	C				

INNER PANEL	TS90_1_10	1	
CABLE BOX	TS90_1_09	1	
CLADDING	TS90_1_08	1	
LID	TS90_1_07	1	
FENCE PANEL	TS90_1_06	1	
TOP FRAME	TS90_1_05	1	
ROTOR	TS90_1_04	1	
BASE FRAME	TS90_1_02	1	
ROTARY BLOCK	TS90_1_01	1	
DESCRIPTION	DRAWING	QTY	



NOTES:
WELD PRACTICES TO BE
IN ACCORDANCE WITH
QMS 7.5.2/7.5.3



REMOVABLE
SECURITY FIXED
DUCT HATCH

MATERIALS:

BASE FRAME:
30x30x3 SHS, 50x30x3 RHS, 100x50x3 RHS

INNER FRAME:
30x30x3 SHS, 26.9x2 CHS

ROTOR:
Ø 76.1x3 CHS, Ø 26.9x2 CHS

TOP FRAME:
50x50x3 RSA, 30x30x3 SHS, 25x25x2 SHS

FENCE PANEL:
30x30x3 SHS, 50x50x3 SHS, Ø 26.9x2 CHS

LID:
25x2 SHS

CLADDING: 1.6mm GALVANISED SHEET



Avon Barrier Company Ltd.
Nova House
195 South Liberty Lane
Ashton Vale Trading Estate
Bristol BS3 2UU
Tel: (44) (0117) 953 5252
Fax: (44) (0117) 953 5373
E-mail: MECHANICAL @AVON-BARRIER.CO.UK

Drawing Title				
90° TURNSTILE G.A. + FOUNDATION DETAILS				
Drawn	Traced	Checked	Approved	Date
M.J		PhJ		4/06
SSUE	REVISION	SIG.	DATE	

SHS = SQUARE HOLLOW SECTION
RHS = RECTANGULAR HOLLOW SECTION
RSA = RECTANGULAR STEEL ANGLE
CHS = CIRCULAR HOLLOW SECTION

IF IN DOUBT ASK

3rd ANGLE PROJECTION

COMPUTER GENERATED
DO NOT ALTER BY HAND

C	INNER PANEL ADDED	M.J	23/2/07
B	2200 WAS 2100	M.J	2/6/06
A	NEW	M.J	6/4/06

Tolerances	Used on	Drawing No.
±0.3 UNLESS STATED	TS090	TS090_101
Material	Finish	Scale
		Sht. of 1 Rev. C