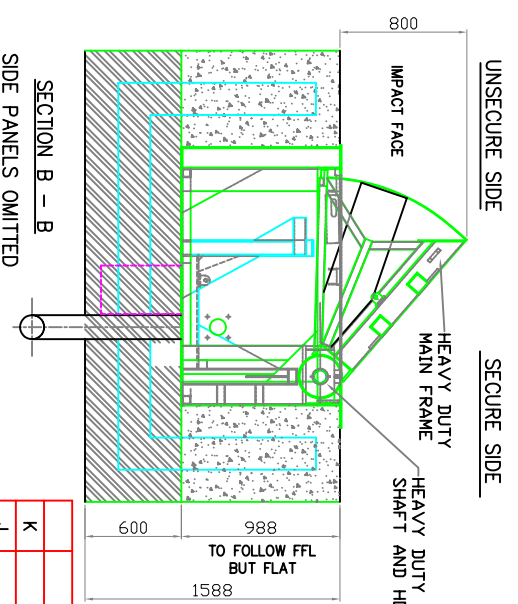
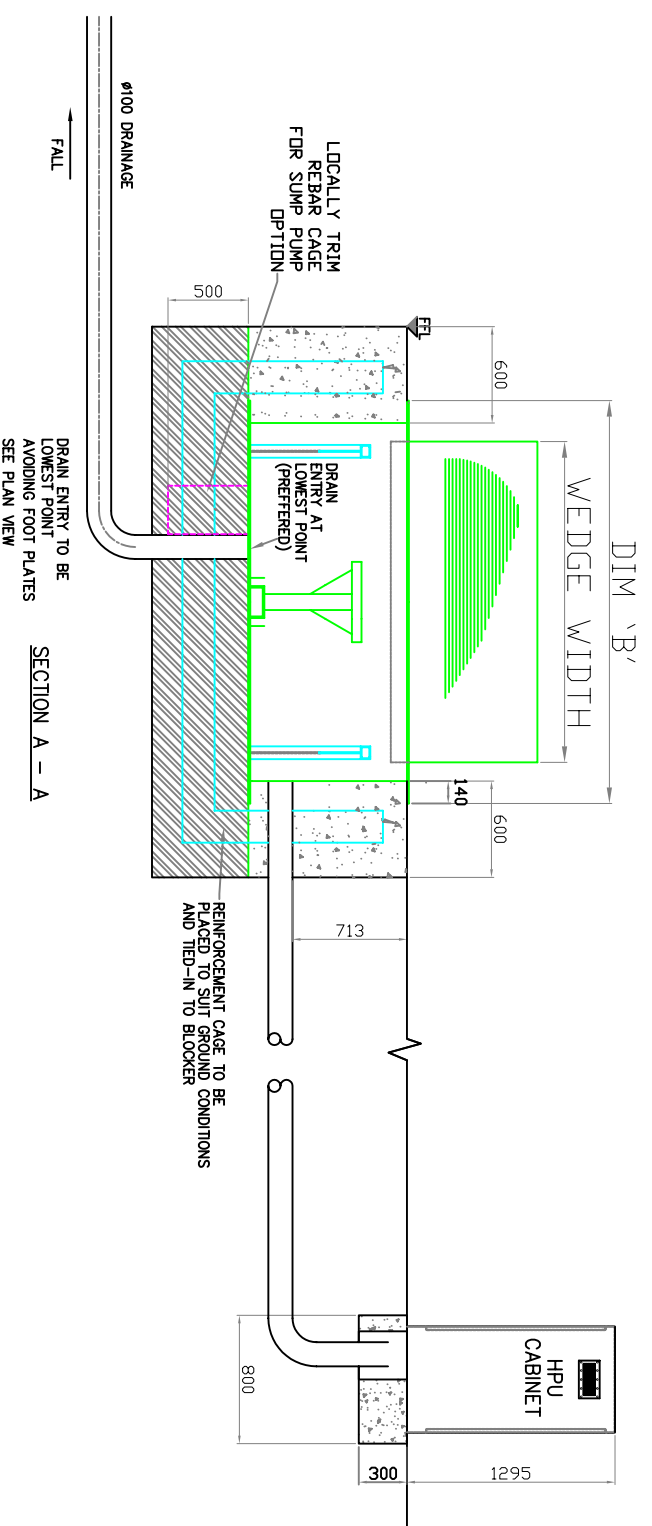
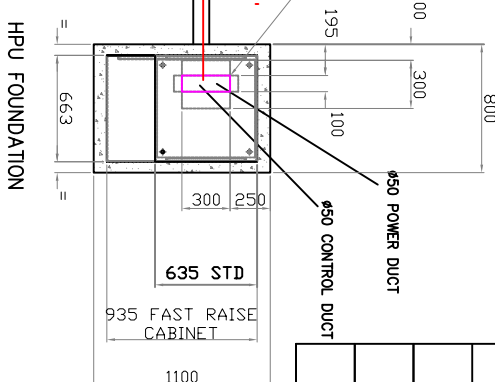
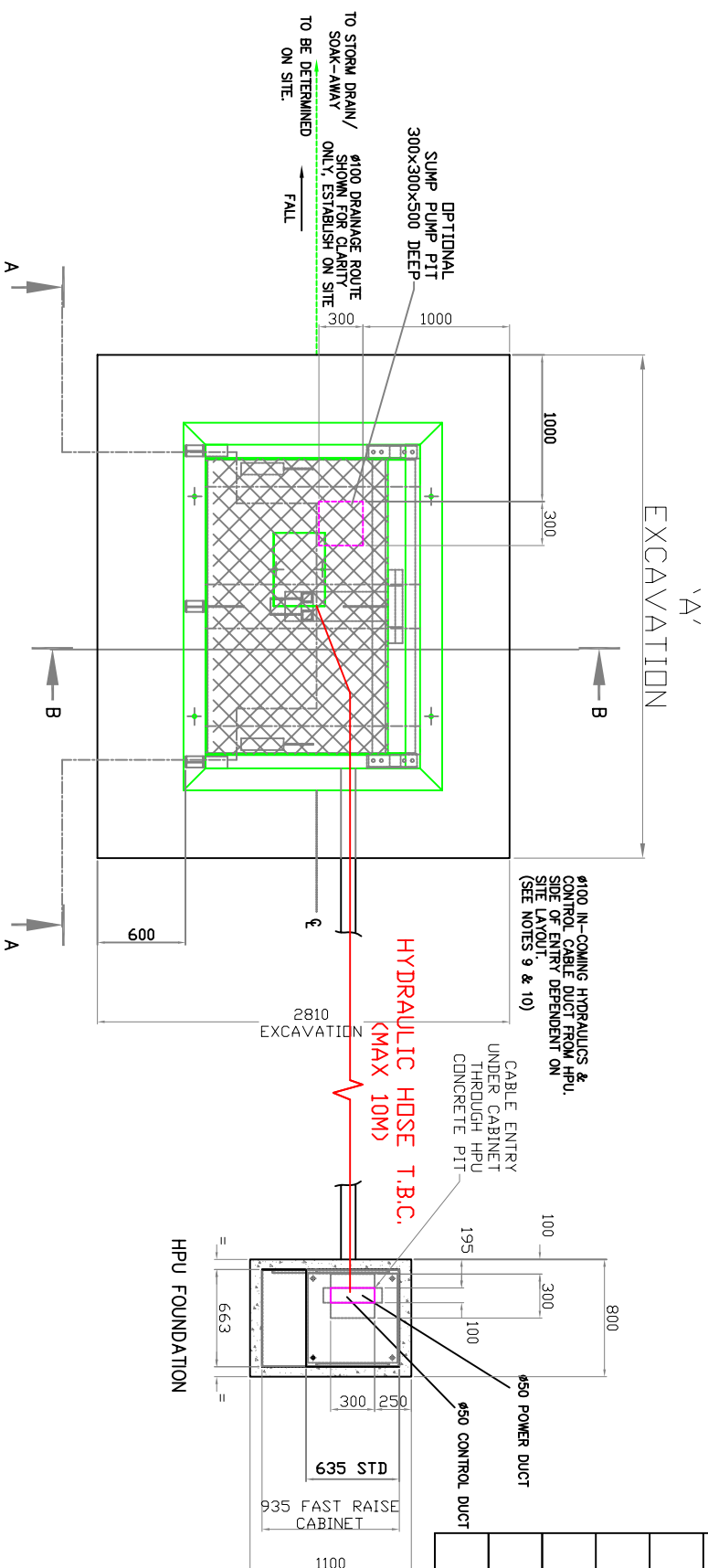
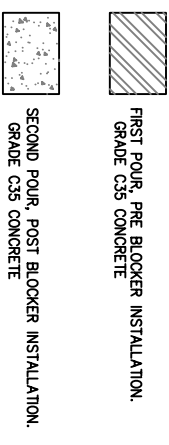


WEDGE WIDTH	DIM 'A'	DIM 'B'
2M	3430	2530
2.5	3930	3030
3M	4430	3530
3.5	4930	4030
4M	5430	4530
4.5	5930	5030
5M	6430	5530
5.5M	6930	6030
6M	7430	6530



- NOTES:**
1. ALL CONCRETE TO BE GRADE C35 UNLESS OTHERWISE SPECIFIED. AIR-ENTRAINED AT SURFACE.
  2. THIS DRAWING IS TO BE READ IN CONJUNCTION WITH ALL RELEVANT ENGINEERS AND ARCHITECTS DRAWINGS AND SPECIFICATIONS.
  3. REFER TO METHOD STATEMENT AND BLOCKER INSTALLATION MANUALS FOR FURTHER INFORMATION.
  4. ALL OTHER INSTALLATION INFORMATION AS PER AVON BARRIER COMPANY INSTALLATION LITERATURE.
  5. ALL CONDUIT/DUCTING #50 UNLESS SPECIFIED OTHERWISE.
  6. ALL FOUNDATION LEVELS TO BE ESTABLISHED FROM FULL SITE SURVEY PRIOR TO COMMENCEMENT OF WORKS.
  7. DRAINAGE TO BE IN ACCORDANCE WITH PREVAILING PROCEDURES AND INSTALLED TO INTERCEPT SPILLAGE AS DIMENSIONED. SCUPPER TO BE POSITION AT LOWEST POINT.
  8. ALL DUCTS TO BE CONSTRUCTED WITH DRAW ROPES.
  9. ALL DUCTS TO BE A MIN. OF 500mm BELOW FINISHED ROAD SURFACE UNLESS OTHERWISE SPECIFIED AND MUST HAVE SMOOTH BENDS.
  10. FOUNDATION TOP TO BE SLIGHTLY PROUD TO ALLOW 'RAIN-OFF'.
  11. CONCRETE THICKNESS TO BE 800mm.
  12. BLOCKER IMPACT FACE TO BE FINISH UNSECURE SIDE.
  13. WHERE EXISTING DRAINS / SERVICE DUCTS RUN BENEATH FOUNDATIONS SUITABLE PRECAUTIONS MUST BE TAKEN TO AVOID DAMAGE.
  14. HPU POWER SUPPLY 3P+ 415V AC 50HZ 16AMP
  15. HOSE SPECIFICATION SAE 100R2 AT 3/8" DOUBLE BRAIDED.



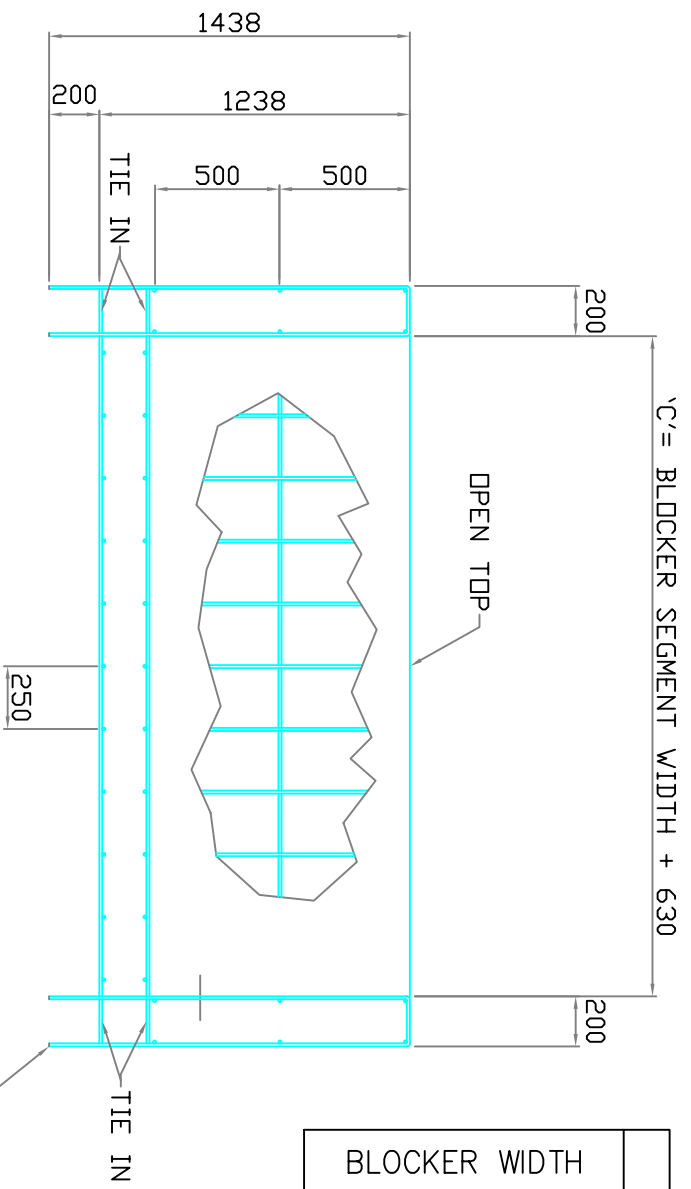
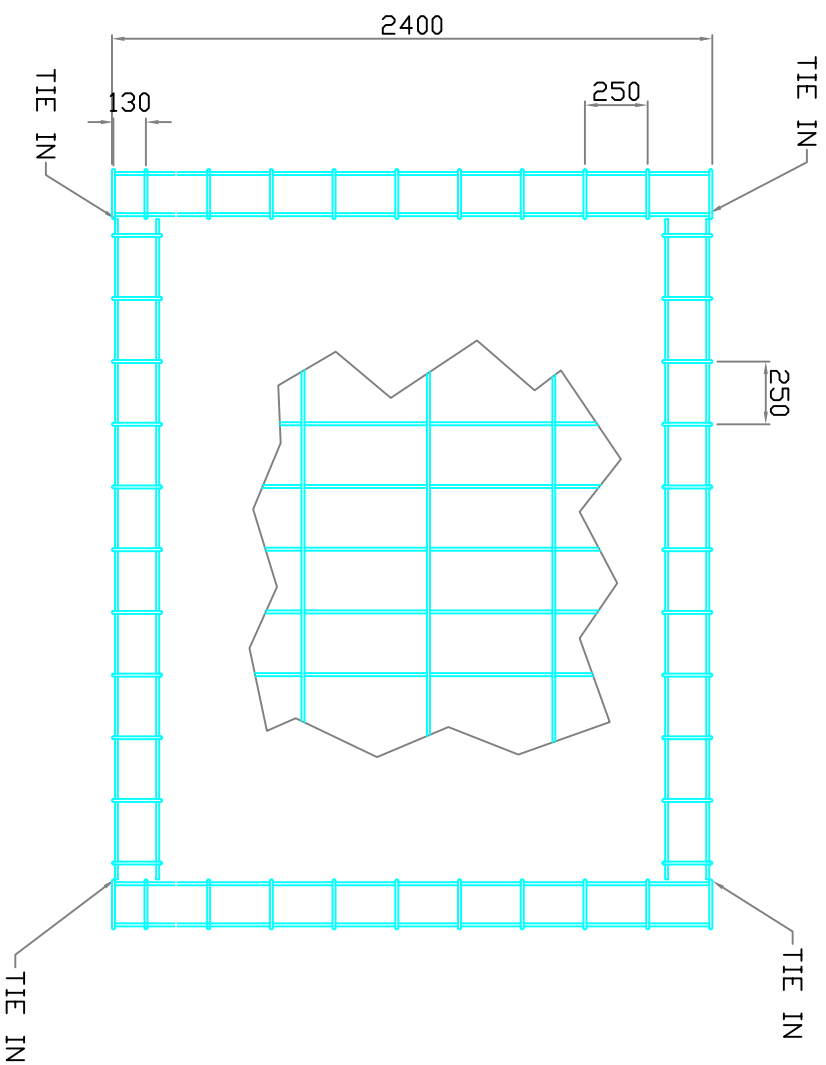
ISSUE	REVISION	SIG.	DATE
A	BASE EXTENDED 50mm FOR ANTI ROLL	SE	9/9/03
B			
C	FOOTPLATE NOTE ADDED, DUCT POSITION	SE	12/5/04
D	DRAWING MOD TO 2 PAGES	PHJ	6/01/05
E	SHEET 2 DELETED	M.J	1/04/05
F	2810 WAS 2650	M.J	21/06/05
G	300 HPU FOUNDATION WAS 800	M.J	12/06/05
H	OPTIONAL SUMP PUMP ADDED	M.J	6/06/06
J	HPU CABINET ADDED	PHJ	21/06/07
K	DIM B + 300	M.J	28/09/09

**Avon Barrier Company Ltd.**  
 Home House  
 195 South Liberty Lane  
 Avelton Vale Trading Estate  
 Bristol BS3 2JU  
 Tel: (44) (0117) 853 5252  
 Fax: (44) (0117) 853 5373  
 E-mail: technical@avon-barrier.co.uk

**RB780 'CHEFTAIN' CR**  
 800 NOMINAL LIFT  
 ROAD BLOCKER  
 GENERAL/FOUNDATION DETAILS

Drawn: SE  
 Checked: SE  
 Approved: SE  
 Date: 4/03/05  
 Scale: 1:1

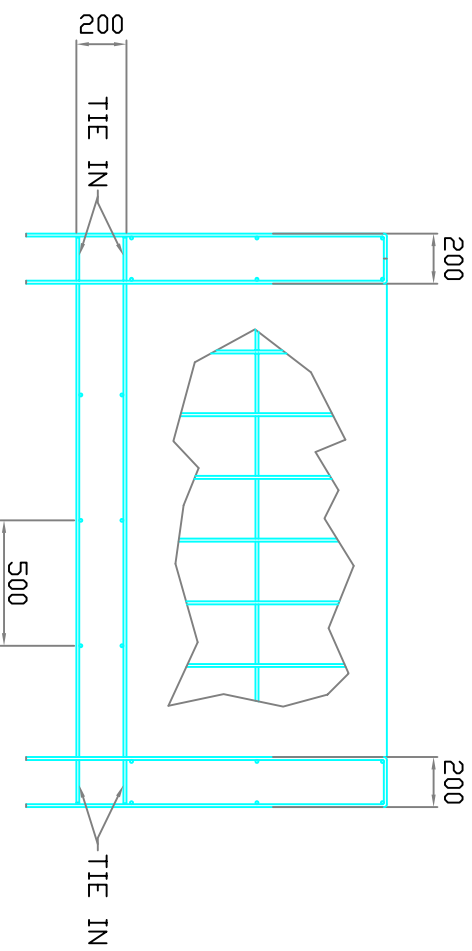
3rd ANGLE PROJECTION  
 COMPUTER GENERATED  
 DO NOT ALTER BY HAND  
 IF IN DOUBT ASK



BLOCKER WIDTH	DIM 'C'
2M	2630
2.5	3130
3M	3630
3.5	4130
4M	4630
4.5	5130
5M	5630

LEGS DN CORNERS ONLY

RB780-1-25 SCHEDULE AVAILABLE ON REQUEST



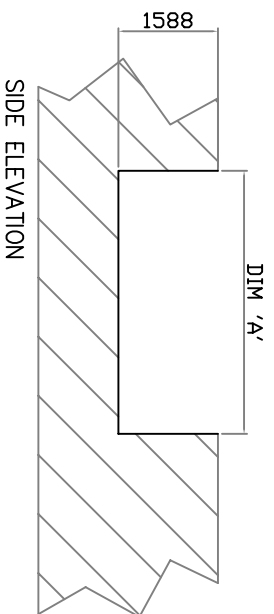
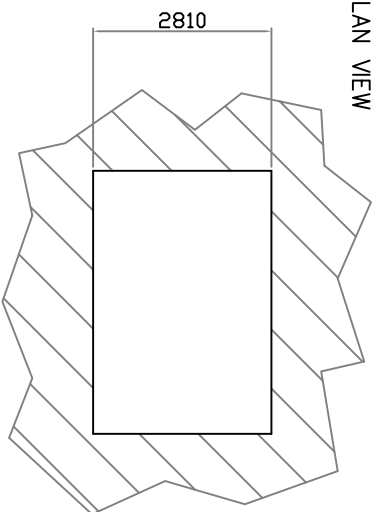
Avon Barrier Company Ltd.  
 Move House  
 195 South Liberty Lane  
 Ashdon Vale Trading Estate  
 Brentford SS3 2JU 053 9292  
 Tel: (44) (0117) 953 9292  
 Fax: (44) (0117) 953 9373  
 E-mail: technical@avon-barrier.co.uk

REV	DATE	SIG	DATE
D	10/10/08	...	10/10/08
C	12/2/08	...	12/2/08
B	M.J 21/6/05	...	M.J 21/6/05
A	SE 26/1/04	...	SE 26/1/04
ISSUE	REVISION	SIG	DATE

IF IN DOUBT ASK	COMPUTER GENERATED DO NOT ALTER BY HAND	3rd ANGLE PROJECTION	Rebar	Rebar	Rebar	Rebar	Rebar	Rebar	Rebar
			RB780 'CHIEFTAIN' CR	RB780 'CHIEFTAIN' CR	RB780 'CHIEFTAIN' CR	RB780 'CHIEFTAIN' CR	RB780 'CHIEFTAIN' CR	RB780 'CHIEFTAIN' CR	RB780 'CHIEFTAIN' CR
			SE	SE	SE	SE	SE	SE	SE
			1	1	1	1	1	1	1
			1/04	1/04	1/04	1/04	1/04	1/04	1/04
			1:15	1:15	1:15	1:15	1:15	1:15	1:15

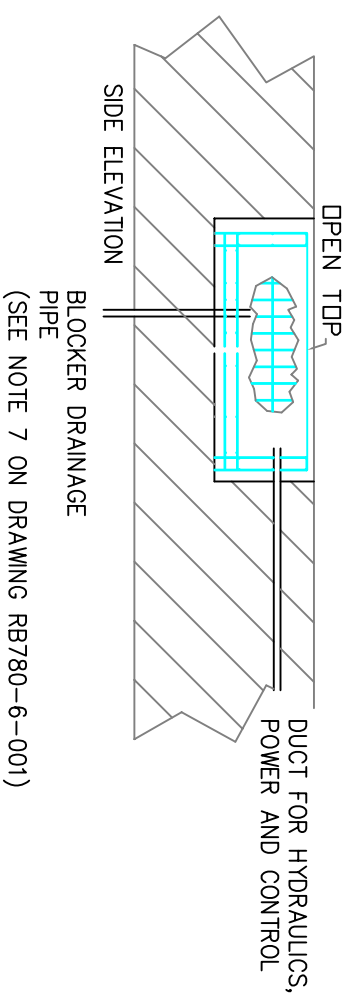
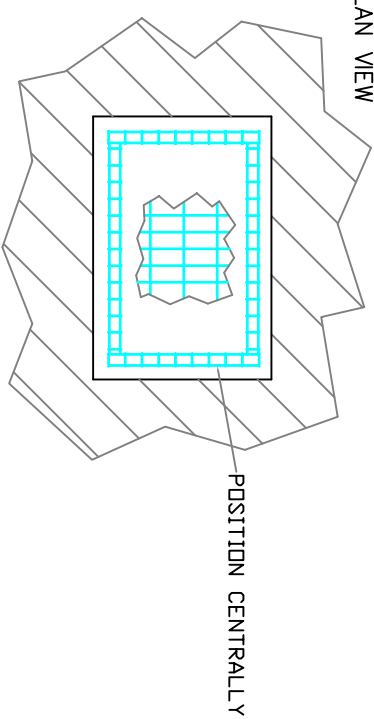
STAGE 1  
EXCAVATE TO THE SIZES SHOWN  
ON FOUNDATION DRAWING  
RB780-6-001  
COMPACT AND LEVEL BASE.

PLAN VIEW



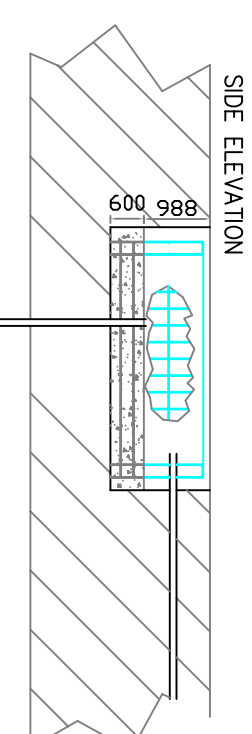
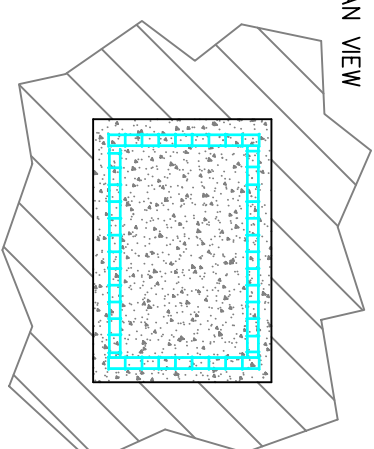
STAGE 2  
PLACE REBAR CAGE INTO POSITION,  
BRING DUCT AND DRAINAGE  
TO THE CORRECT POSITIONS  
SEE DRAWING 780-1-14

PLAN VIEW



STAGE 3  
FIRST POUR, ENSURE IT IS AT THE  
CORRECT DEPTH FROM FINISHED  
FLOOR LEVEL, TAMP TO REMOVE AIR BUBBLES,  
TROWEL TO A FLAT AND LEVEL FINISH TO SUIT  
CAMBER OF ROAD.

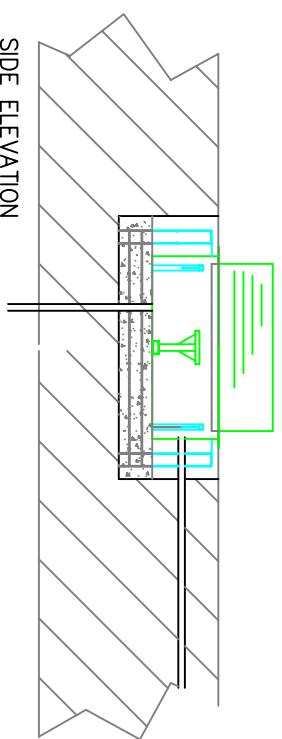
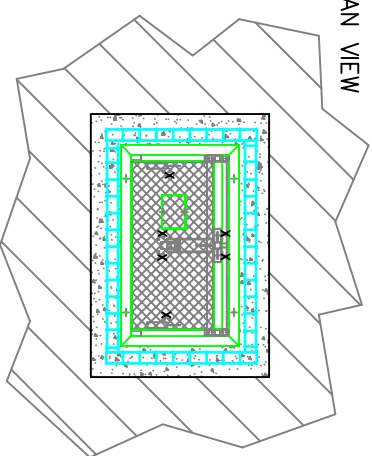
PLAN VIEW



NOTES  
DRAWING MUST BE READ  
IN CONJUNCTION WITH  
RB780-6-001  
(FOUNDATION DRAWING)  
AND  
RB780-1-14 (REBAR DRAWING)

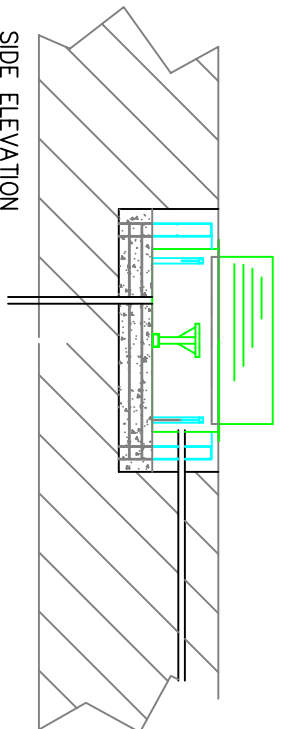
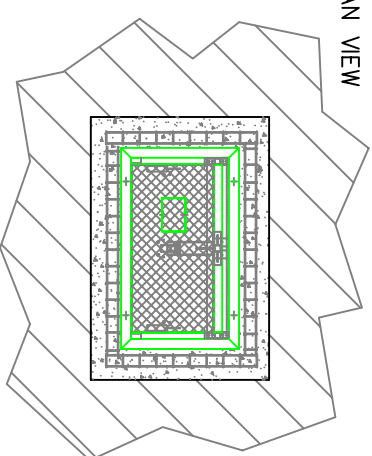
STAGE 4  
ORIENTATE BLOCKER WITH THE FRONT OF  
WEDGE FACING THE REQUIRED DIRECTION.  
(CURVED FACE TO INSECURE SIDE)  
ENSURE THE BLOCKER IS SITTING FLAT AND LEVEL  
AND THAT IT IS PARALLEL TO THE ROAD.  
SECURE USING 6 OFF CHEMICAL ANCHORS POSITION X.

PLAN VIEW



STAGE 5  
TERMINATE DUCTING INTO BLOCKER AND SEAL OFF.  
POUR CONCRETE AROUND BLOCKER UP TO THE  
UNDERSIDE OF THE TOP FRAME ANGLE  
ENSURE BLOCKER DOES NOT MOVE DURING SECOND POUR.

PLAN VIEW



WEDGE WIDTH	DIM 'A'
2M	3430
2.5	3930
3M	4430
3.5	4930
4M	5430
5M	6430

REVISION	DATE	SIG.	DATE
D	STAGE 4 X NOTE ADDED	M.J	1/2/07
C	2810 WAS 2650	M.J	26/1/07
B	ADDING DIMS	SE	6/01/05
A	MANUFACTURE	SE	26/1/04
ISSUE	REVISION	SIG.	DATE

3rd ANGLE PROJECTION	COMPUTER GENERATED DO NOT ALTER BY HAND	IF IN DOUBT ASK
----------------------	--	-----------------

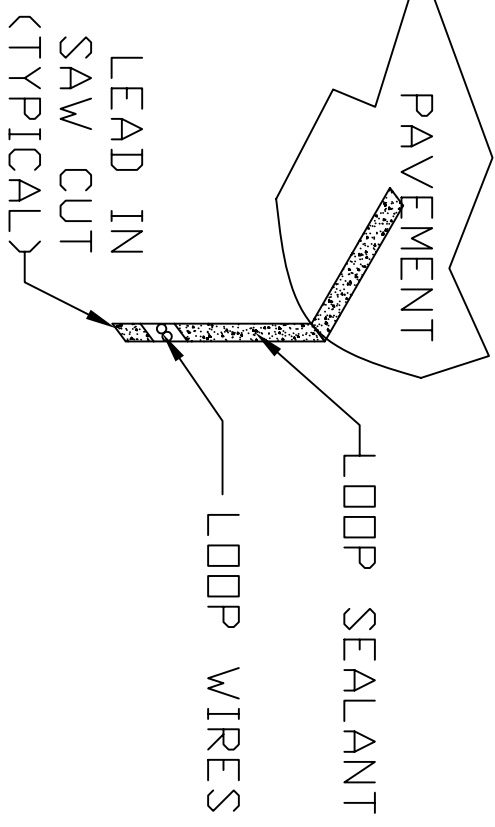
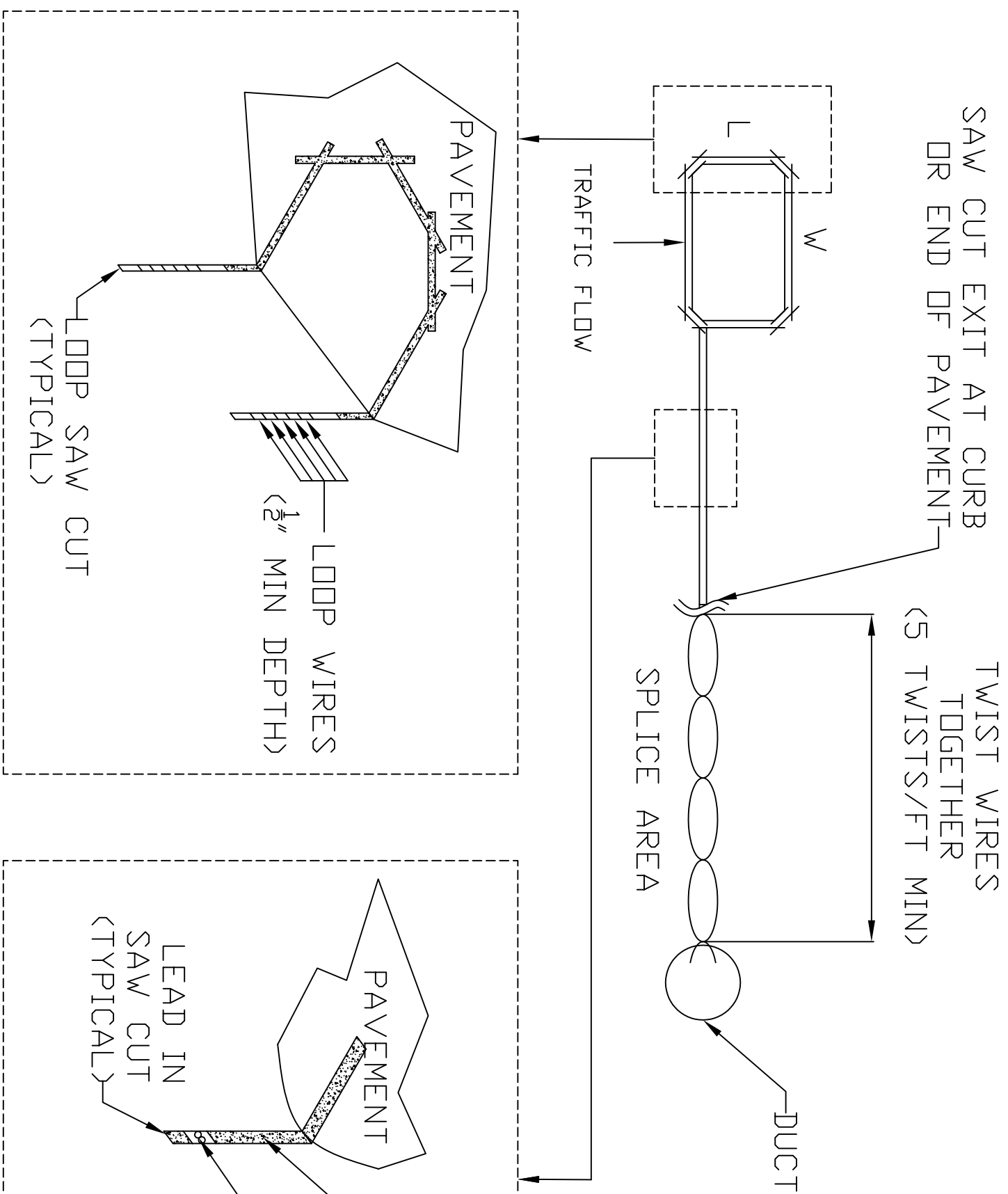
INSTALLATION  
SEQUENCE  
FOR ROAD  
BLOCKERS

Drawn	Traced	Checked	Approved	Date	Scale
SE				1/04/NTS	

Avon Barrier Company Ltd.  
135 South Liberty Lane  
Ashton Vale Trading Estate  
Bristol BS3 2JU  
Tel: (44) (0117) 953 5252  
Fax: (44) (0117) 953 5373  
E-mail: technical@avon-barrier.co.uk



WIDTH	LENGTH	NO. TURNS
2	0.5	5
2	1	5
3	1	4
3	2	4
4	2	3
4	3	3
4	4	3
4	5	3
5	2	3
5	3	3
5	4	3



**AVON BARRIER COMPANY**

Avon Barrier Company Ltd.  
 Novo House  
 195 South Liberty Lane  
 Ashton Vale Trading Estate  
 Bristol BS3 2JU  
 Tel: (44) (0117) 953 5252  
 Fax: (44) (0117) 953 5373  
 E-mail: TECHNICAL@AVON-BARRIER.CO.UK

Drawing Title  
**TYPICAL SAW CUT LOOP INSTALLATION**

Material	Finish	Scale	Shr.	of	Rev.
CABLE TYPE: 1.5mm CORE CLASS 854 TYPE 4A DOUBLE INSULATED RUBBER SHEATHED		NTS	1	1	B

Issue	Revision	Sig.	Date	Drawn	Traced	Checked	Approved	Date
B	TABLE ADDED, MATERIAL ADDED	M.J.	26/8/05	M.J.				
A	MANF	M.J.	21/6/05	M.J.				6/05

3rd ANGLE PROJECTION

IF IN DOUBT ASK

COMPUTER GENERATED DO NOT ALTER BY HAND