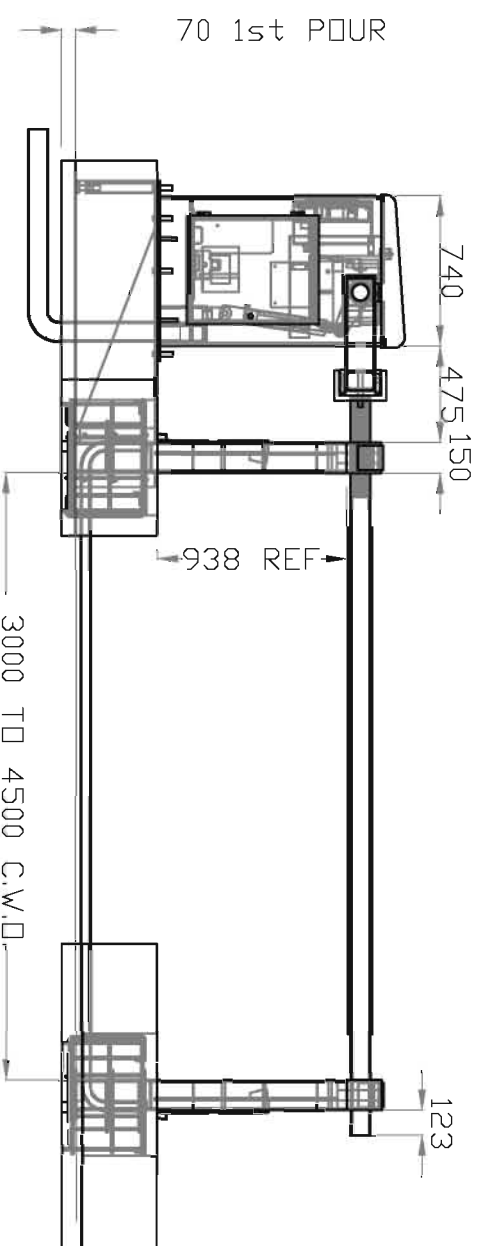
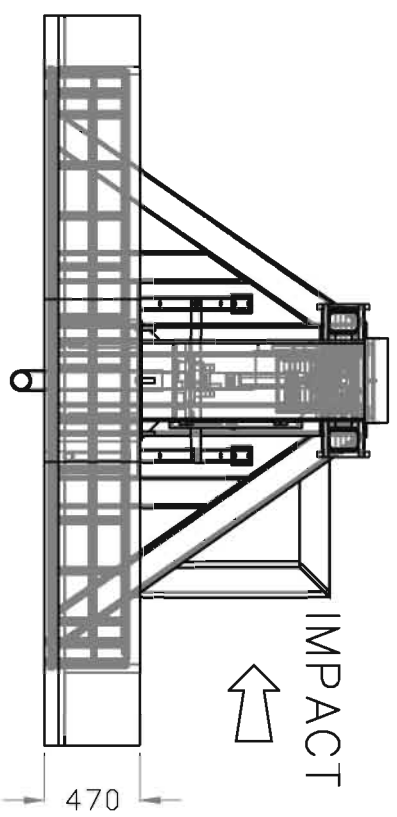
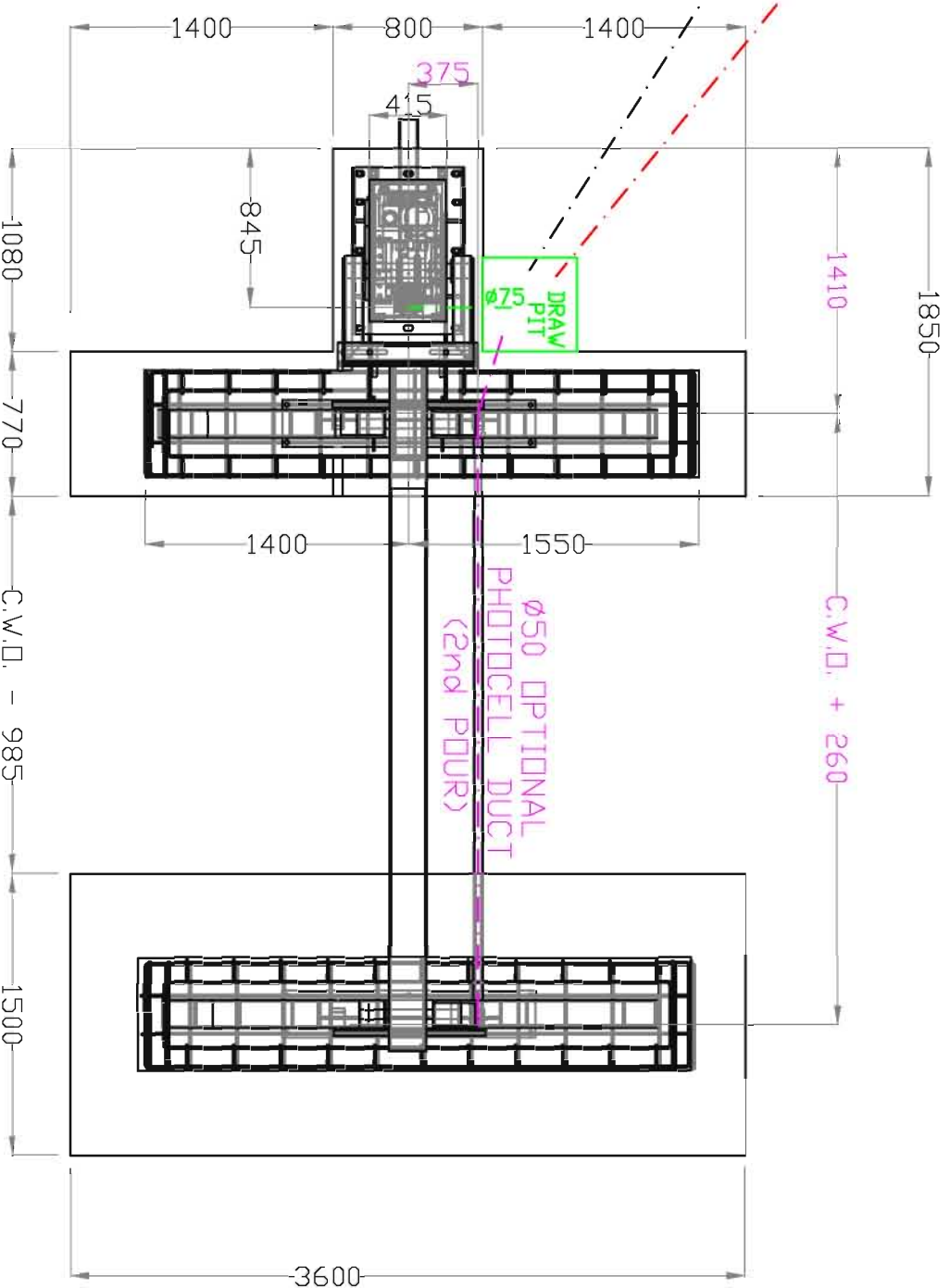


Ø100 POWER DUCT
Ø50 CONTROL DUCT



C35 CONCRETE

F	DRAW PIT & Ø75 DUCT SHOWN	M.J	2/3/10
E	2 PHOTOCELLS, DUCT MOVED	M.J	25/11/08
D	CABINET TO CATCHER +150	M.J	9/4/08
C	PHOTOCELL DUCT REDEFINED	M.J	24/7/07
ISSUE	REVISION	SIG.	DATE

EB950CR
ARMSTRONG
SECURITY
BARRIER
470 FOUNDATION

Drawn by	M.J	Checked	Approved	Date
Drawn by		Checked	PhJ	4/07

3rd ANGLE PROJECTION

±0.3 EB950CR

EB950CR_104

IF IN DOUBT ASK

COMPUTER GENERATED
DO NOT ALTER BY HAND

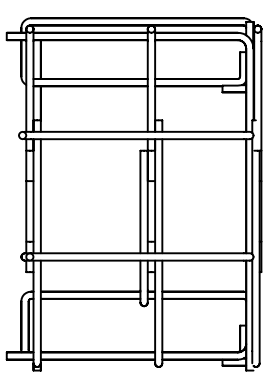
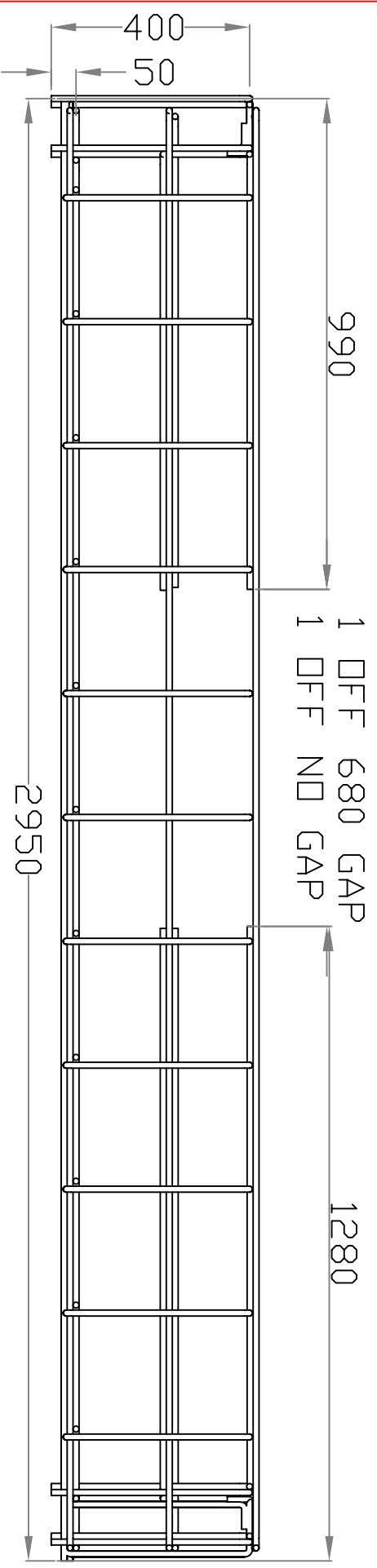
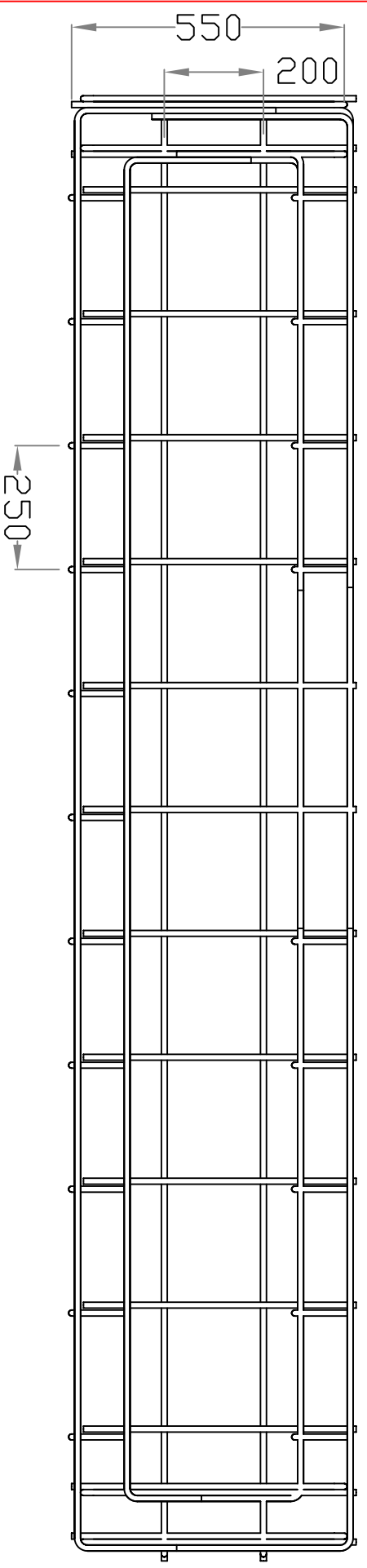
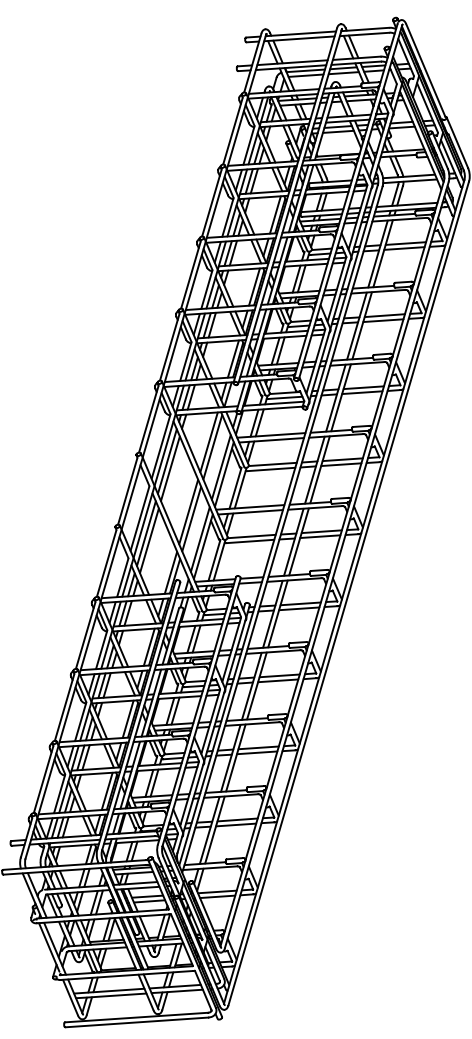
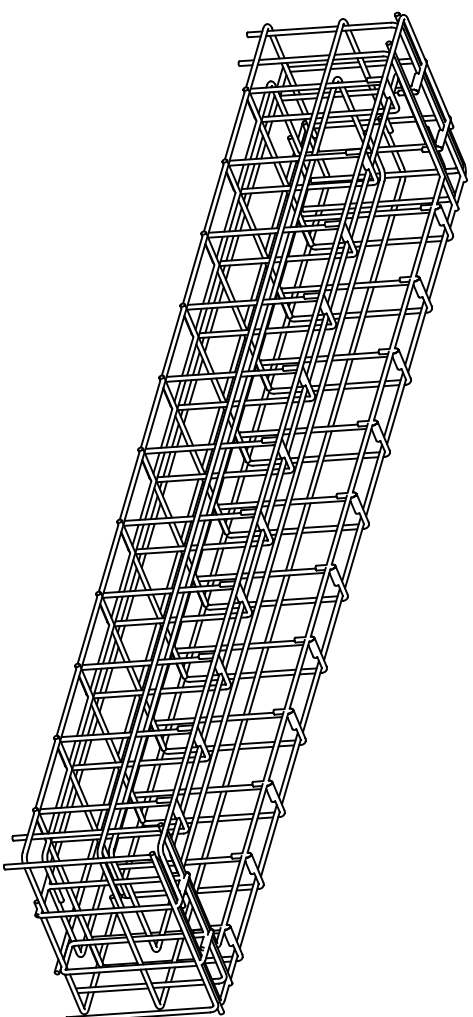
AS W.I.

Scale	NTS	Shl.	1	of	1	Shn.	F
-------	-----	------	---	----	---	------	---

ROOM 41.3 Kg/M (ROOM LENGTH = C.W.D.+650)
FLATS 2x14.13 Kg/M (FLAT LENGTH=C.W.D.-0.5M)



Avon Barrier Company Ltd.
Nova House
195 South Liberty Lane
Ashton Vale Trading Estate
Bristol BS3 2UJ
Tel (44) (0117) 953 5252
Fax (44) (0117) 953 5373
E-mail: MECHANICAL@AVON-BARRIER.CO.UK



2 CAGES REQUIRED, EB950CR_1_59 BENDING
 SCHEDULE AVAILABLE ON REQUEST



Avon Barrier Company Ltd
 Nova House
 195 South Liberty Lane
 Ashton Vale Trading Estate
 Bristol BS3 2UU
 Tel: (44) (0117) 953 5252
 Fax: (44) (0117) 953 5373
 E-mail: MECHANICAL@AVON-BARRIER.CO.UK

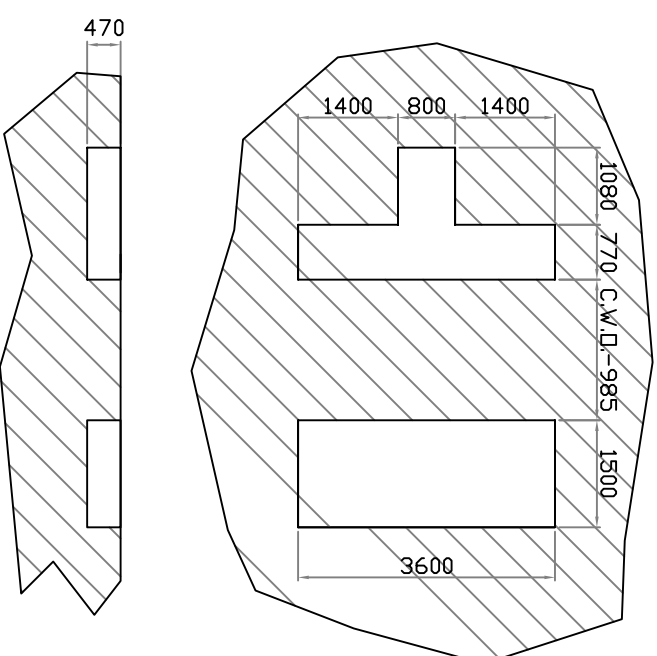
Drawing Title
**ARMSTRONG
 MANUAL 470
 DEEP
 SECURITY
 BARRIER
 REBAR**

Material	Finish	Scale	Shc.	of	Rev.
T12 REBAR	NONE	1	1	A	

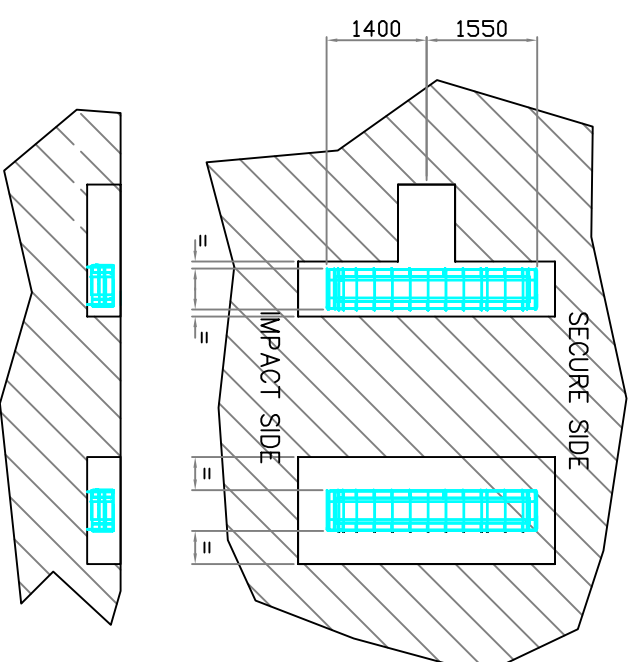
Issue	Revision	Signature	Date
E	REF. EB950CR_1_59 SCHEDULE	M.J	9/10/08
D	470 DEEP FOUNDATION	M.J	17/5/07
ISSUE	REVISION	SIG.	DATE

3rd ANGLE PROJECTION
 COMPUTER GENERATED
 DO NOT ALTER BY HAND
 IF IN DOUBT ASK

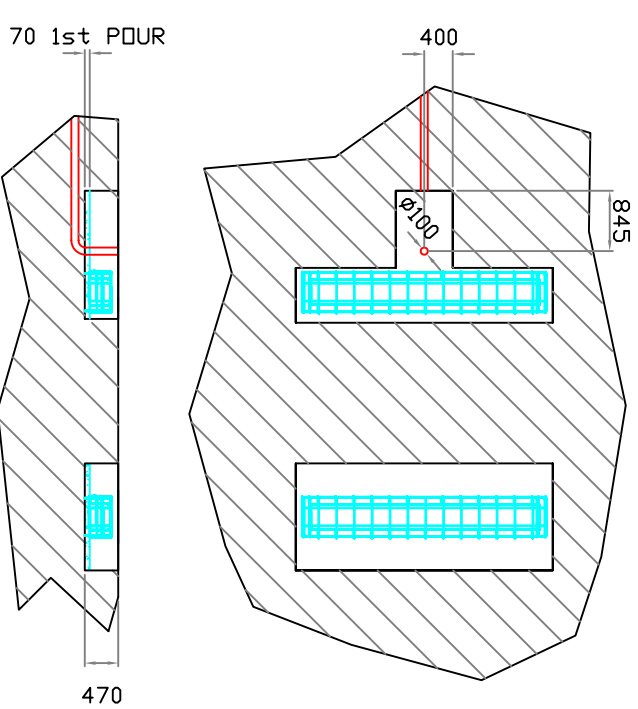
STAGE 1
EXCAVATE TO THE SIZES SHOWN.
COMPACT AND LEVEL BASE.
REF. DRAWING EB950CR-104.



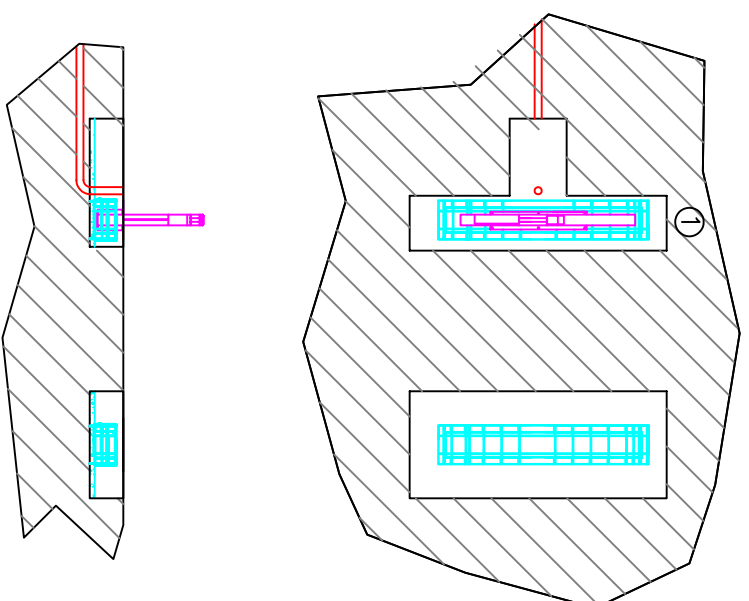
STAGE 2
PLACE REBAR CAGE (EB950-1-09)
OFFSET 150mm SECURE SIDE.



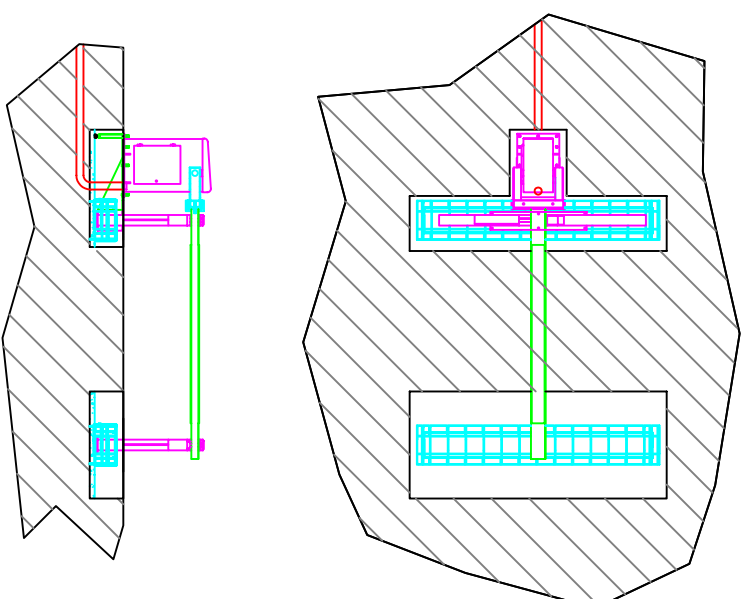
STAGE 3
BRING DUCT TO CORRECT POSITION.
FIRST POUR C35 CONCRETE, ENSURE IT IS AT THE
CORRECT DEPTH FROM FINISHED FLOOR LEVEL.
TAMP TO REMOVE AIR BUBBLES.
TROWEL TO A FLAT AND LEVEL FINISH.



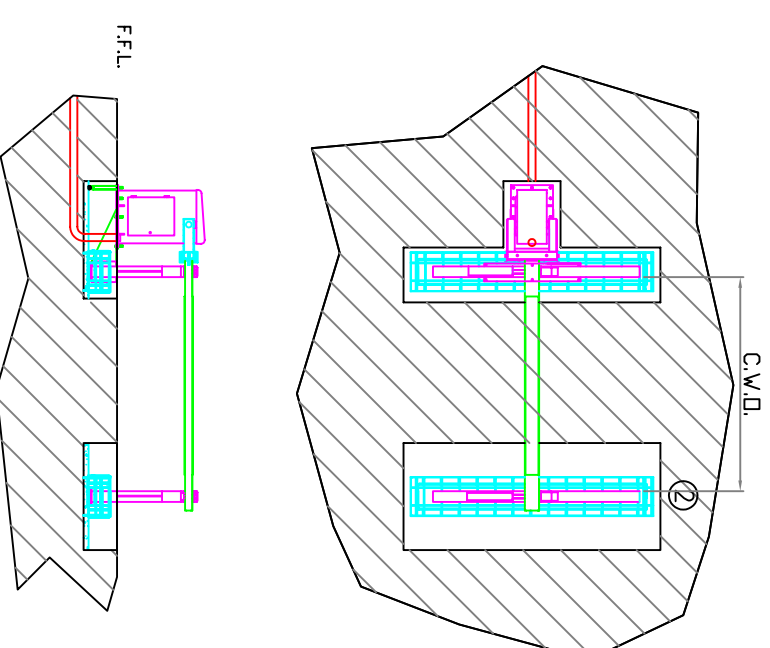
STAGE 4
ORIENTATE BARRIER CATCHERS FACING IMPACT DIRECTION.
ENSURE A FRAME IS SITTING FLAT LEVEL.
SECURE ① USING 6 OFF CHEMICAL ANCHORS.



STAGE 5
ASSEMBLE CABINET SHELF TO CATCHER A FRAME.
EXTEND SHELF PROPS, ENSURE SHELF IS FLAT AND LEVEL.
LOCATE CABINET ON TABLE.
ASSEMBLE POST MOUNTED PHOTOCELLS (WHERE REQUIRED)
WITH DUCTING.



STAGE 6
FINAL CHECK LEVELS AND C.W.O.
SECURE ② USING 6 CHEMICAL ANCHORS.
TERMINATE DUCTING AND SEAL OFF.
POUR UP TO F.F.L.



Avon Barrier Company Ltd
195 South Liberty Lane
Ashton Vale Trading Estate
Bristol BS3 2JU
Tel: (44) (0)117 953 5252
Fax: (44) (0)117 953 5373
E-mail: technical@avon-barrier.co.uk

INSTALLATION SEQUENCE
FOR CRASH GATE

IF IN DOUBT ASK	B	FOUNDATION + 150mm	M.J/24/7/08				
	A	MANUFACTURE	M.J/12/07				
	SSUE	REVISION	SIG.	DATE			
3rd ANGLE PROJECTION		AS PER ABOVE			CRASH GATE		
COMPUTER GENERATED DO NOT ALTER BY HAND		C35 CONCRETE T12 RE-BAR			TROWELLED + FLAT ON CONCRETE	EB950CR_105	1 1 B