

FIXING 6 OFF B16x190 CHEM. BOLTS

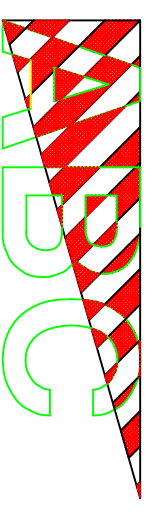
NOTES:

1. ELECTRO-MECHANICAL BARRIER - EB950 TRIUMPH. LINEAR ACTUATOR 24V DC. 40W. NITROGEN GAS STRUT. CONTROL VOLTAGE 24V. WINDING HANDLE FACILITY IN THE EVENT OF A POWER FAILURE. LOCKABLE HINGED FRONT DOOR, REMOVABLE LD.
2. BARRIER CABINET SECURED TO FOUNDATION USING 6 x M16 x 190 CHEMICAL ANCHORS.
3. BOOM - CIRCULAR SECTION REINFORCED RESIN, BONDED FIBRE #82 WITH RED/WHITE FASCAL STRIPES 340 LONG WITH REINFORCEMENT AT FIXING POINT.
4. END STEADY WITH RUBBER SUPPORT, ADJUSTABLE HEIGHT SPRING LOADED. SECURED TO FOUNDATION USING 4 x M12 x 160 CHEMICAL ANCHORS.
5. ALL DUCTING PVC. #50. UNLESS OTHERWISE SPECIFIED. SHOWN THUS: ■■■■
6. CABLE DETAILS:
 MAINS SUPPLY - 230V/Øh. 3 x 1.5mm
 CONTROL CABLE PUSH BUTTONS - 6 x 1.5mm
 ALL SUBJECT TO SITE CONDITIONS.

MATERIALS

- BOOM - Ø83 GRP
- SKIRT DROPS - 16 x 3 GRP FLAT
- TOP AND BOTTOM ANGLES - 25 x 25 x 3 GRP

ISSUE	REVISION	SIG.	DATE



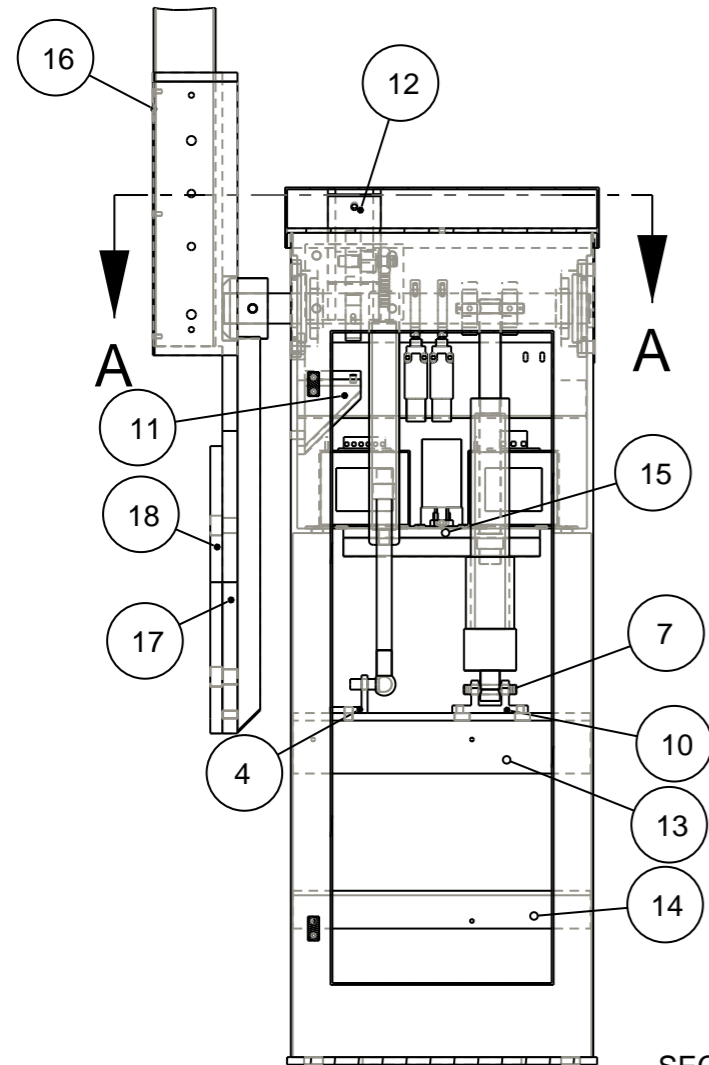
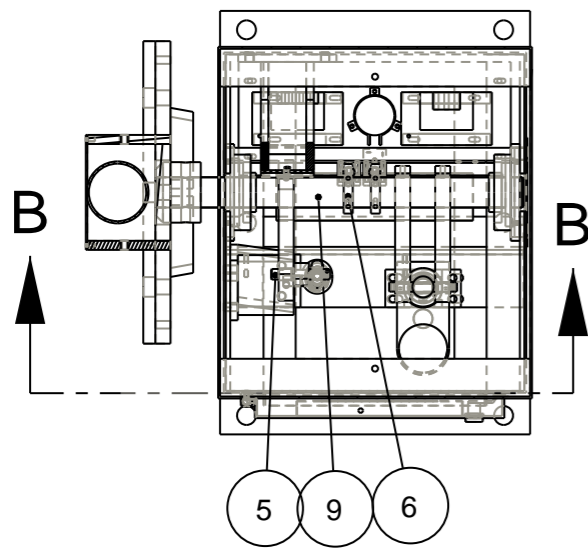
Avon Barrier Company Ltd.
 Nova House
 195 South Liberty Lane
 Ashton Vale Trading Estate
 Bristol BS3 2UU
 Tel: (44) (0117) 953 5252
 Fax: (44) (0117) 953 5373
 E-mail: technical@avon-barrier.co.uk

Drawing Title

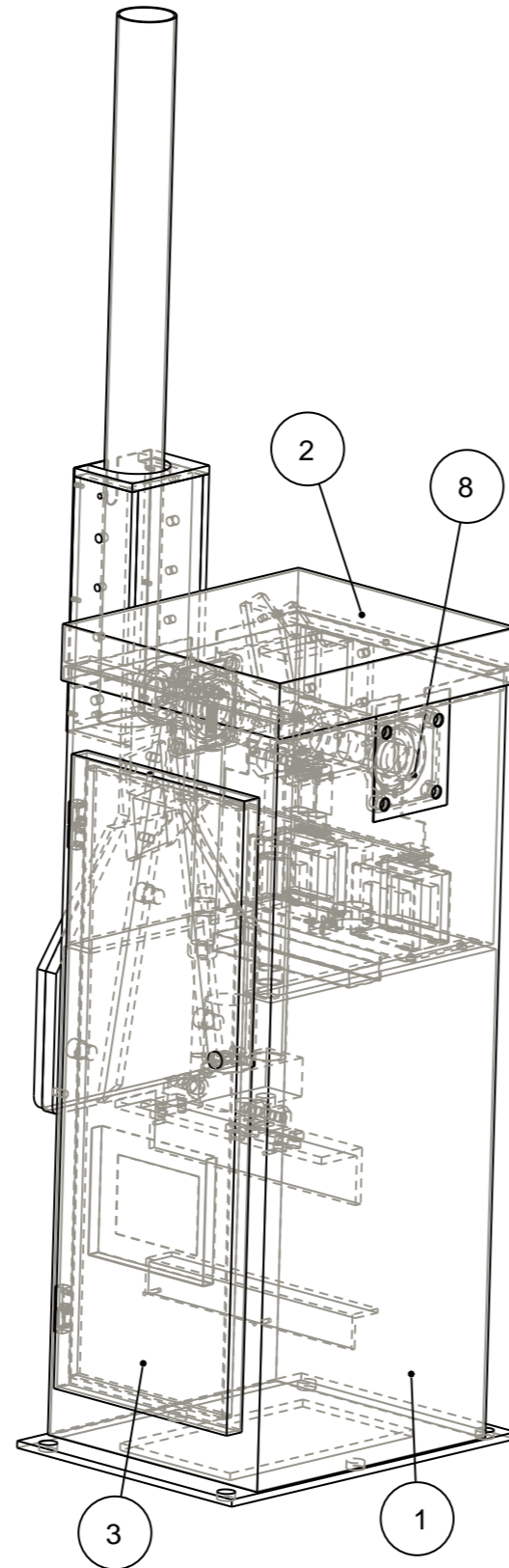
AVON EB950 TRIUMPH BARRIER,
 GENERAL ASSEMBLY.
 SKIRT AT 180 CENTRES

Drawn	Traced	Checked	Approved	Date	Scale
M.J.				06/10	NTS
Drawing No. EB950-6-01					Issue
					A

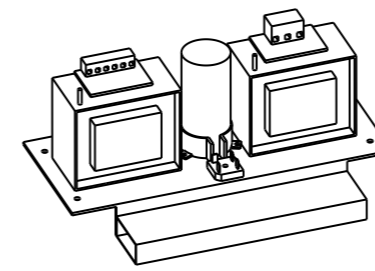
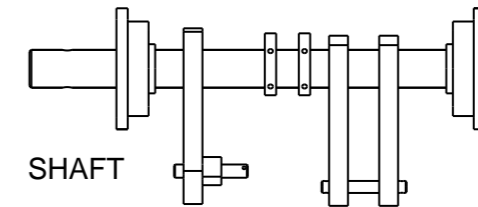
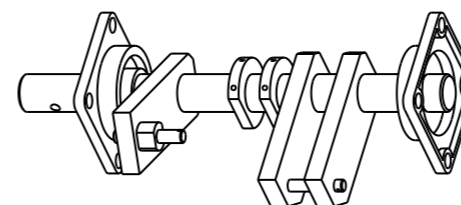
SECTION A-A



SECTION B-B
SCALE 0:1



ITEM	DESCRIPTION	DRAWING
1	CABINET	EB950-1-16
2	LID	EB950-1-14
3	DOOR	EB950-1-15
4	GAS SPRING MOUNTING	EB950-0-01
5	GAS SPRING DRIVE PIN	EB950-0-02
6	LIMIT SWITCH CAM	EB950-0-07
7	ACTUATOR DRIVE PIN	EB950-0-09
8	BEARING BLANK PLATE	EB950-0-19
	BEARING BLANK PLATE	EB950-0-18
9	SHAFT & DRIVE ARMS	EB950-1-03
10	ACTUATOR MOUNTING	EB950-1-04
11	LOWER BUFFER BRACKET	EB950-1-05
12	REAR BUFFER BRACKET	EB950-1-06
13	A&B CABINET BRACKET	EB950-1-10
14	C CABINET BRACKET	EB950-1-11
15	TRANSFORMER TRAY	EB950-1-12
16	SIDE ARM COVER PLATE	EB950-1-20
	SIDE ARM BOSS	EB950-1-21
17	SIDE ARM	EB950-1-22
	SKIRT DRAG LINK	EB950-1-22



NOTES:
WELD PRACTICES TO BE
IN ACCORDANCE WITH
QMS 7.5.2/7.5.3



Avon Barrier Company Ltd.
Nova House
195 South Liberty Lane
Ashton Vale Trading Estate
Bristol BS3 2UU
Tel: (44) (0117) 953 5252
Fax: (44) (0117) 953 5373
E-mail: MECHANICAL @AVON-BARRIER.CO.UK

Drawing Title

EB950
ASSEMBLY

A		NEW		M.J 13/6/08		Drawn	Traced	Checked	Approved	Date	
SSUE		REVISION		SIG. DATE		M.J		...		6/08	
Tolerances				Used on				Drawing No.			
				EB950CR				EB950_100			
Material				Finish				Scale			
								NTS			
								Sht. of Rev.			
								1 1 A			

IF IN DOUBT ASK

3rd ANGLE PROJECTION

COMPUTER GENERATED
DO NOT ALTER BY HAND