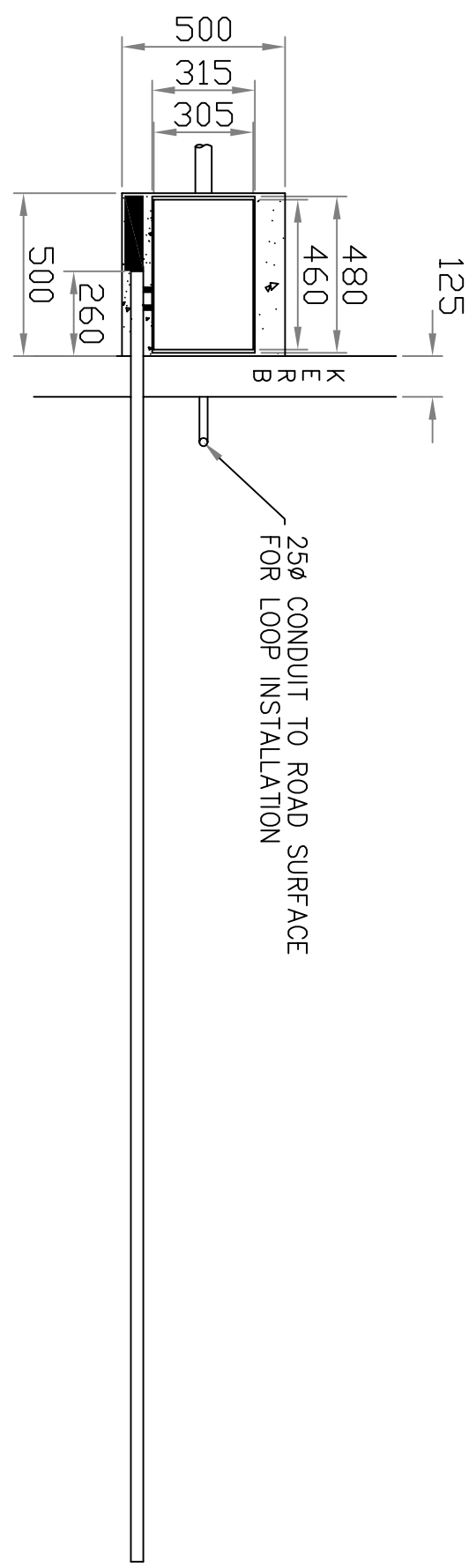


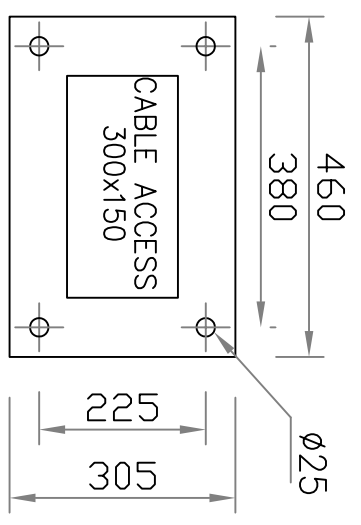
BOOM LENGTH = A = 7M MAX

COUNTERWEIGHTS TO SUIT CUSTOMER REQUIREMENTS: I.E. LIGHT(S), SKIRT, STOP SIGNS, POGO.



- LEGEND:**
- ELECTRO-MECHANICAL BARRIER EB750 PARKING MOTOR 0.375KW 230V 50HZ DIRECT DRIVE VIA GEARBOX, CONTROL VOLTAGE 24V DC. WINDING HANDLE FACILITY IN THE EVENT OF A POWER FAILURE. HINGED TOP LID (OPTIONALLY REMOVABLE). LOCKABLE SIDE COVER. 4xM12x160 CHEMICAL ANCHORS.
 - BOOM-RECTANGULAR SHAPED ALUM. 76x38mm, POWDER COATED WHITE, RED REFLECTIVE STRIPES 60x350mm AT 750mm CENTRES WITH REINFORCEMENT AT FIXING POINT.

- ALL DUCTING TO BE 50Ø MIN. UNLESS OTHERWISE SPECIFIED.
CABLE DETAILS
X DENOTES MAINS SUPPLY 230V 1PH 6AMP. 3x2.5mm²
Y DENOTES CONTROL CABLE PUSH BUTTONS 6x1.5mm² SUBJECT TO SITE CONDITIONS.



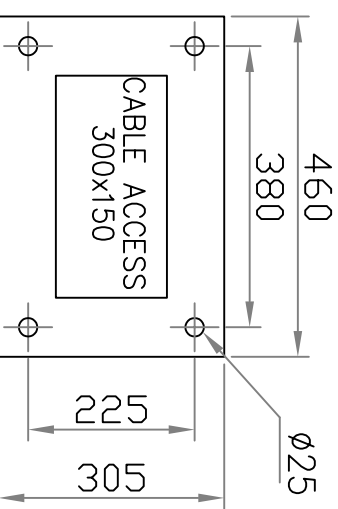
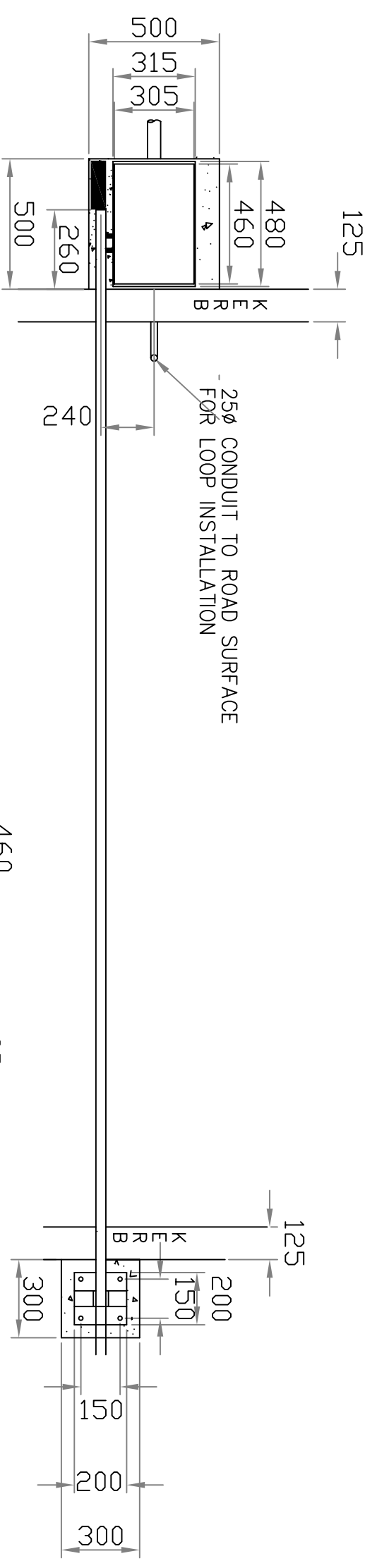
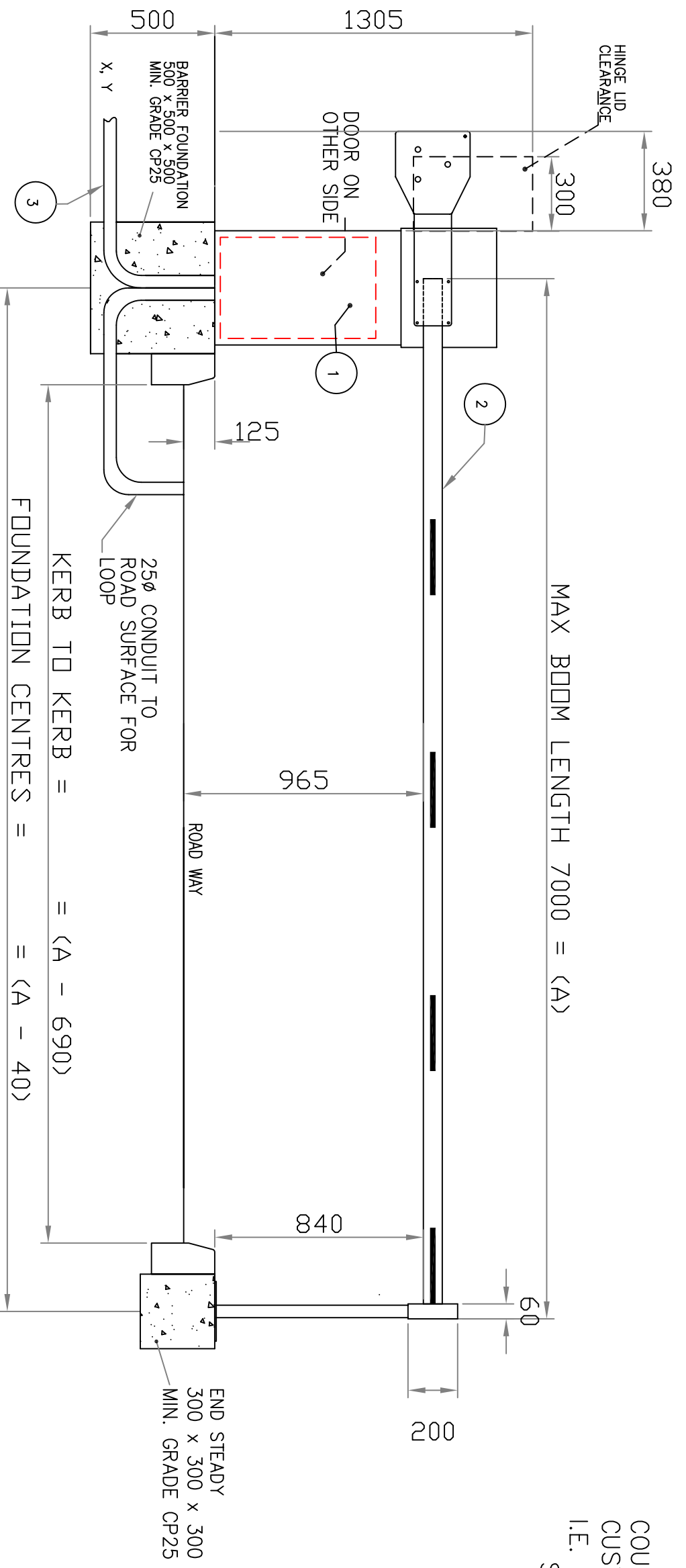
ISSUE	REVISION	SIG.	DATE
A	MOD TO 50/5/010	.	15/11/05

Avon Barrier Company Ltd.
Nova House
195 South Liberty Lane
Ashton Vale Trading Estate
Bristol BS3 2UJ
Tel: (44) (0)117 953 5252
Fax: (44) (0)117 953 5373
E-mail: TECHNICAL@AVON-BARRIER.CO.UK

Drawing Title
AVON EB750 PARKING BARRIER,
(NO END STEADY)
FOUNDATION DETAIL
GENERAL ARRANGEMENT.

Drawn	Traced	Checked	Approved	Date	Scale
M.J	.	.	.	11/05/NTS	
Drawing No.		Sht.	of	Rev.	
EB750-6-01		1	1	A	

COUNTERWEIGHTS TO SUIT CUSTOMER REQUIREMENTS: I.E. LIGHT(S), SKIRT, STOP SIGNS, POGO.



LEGEND:

- ELECTRO-MECHANICAL BARRIER EB750 PARKING MOTOR 0.375KW 230V 50HZ DIRECT DRIVE VIA GEARBOX, CONTROL VOLTAGE 24V DC. WINDING HANDLE FACILITY IN THE EVENT OF A POWER FAILURE. HINGED TOP LID (OPTIONALLY REMOVABLE). LOCKABLE SIDE COVER. 4xM12x160 CHEMICAL ANCHORS.
- BOOM-RECTANGULAR SHAPED ALUM. 76x38mm, POWDER COATED WHITE, RED REFLECTIVE STRIPES 60x350mm AT 750mm CENTRES WITH REINFORCEMENT AT FIXING POINT.
- ALL DUCTING TO BE 50mm MIN. UNLESS OTHERWISE SPECIFIED.
CABLE DETAILS
X DENOTES MAINS SUPPLY 230V 1PH 6AMP. 3x2.5mm
Y DENOTES CONTROL CABLE PUSH BUTTONS 6x1.5mm SUBJECT TO SITE CONDITIONS.

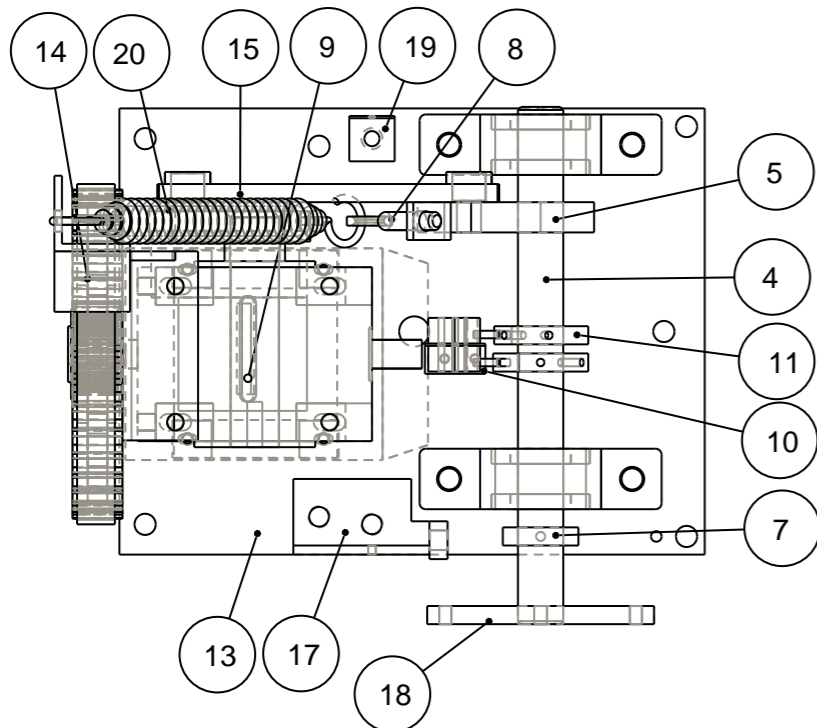


Avon Barrier Company Ltd.
Nova House
195 South Liberty Lane
Ashton Vale Trading Estate
Bristol BS3 2UJ
Tel: (44) (0)117 953 5252
Fax: (44) (0)117 953 5373
E-mail: TECHNICAL@AVON-BARRIER.CO.UK

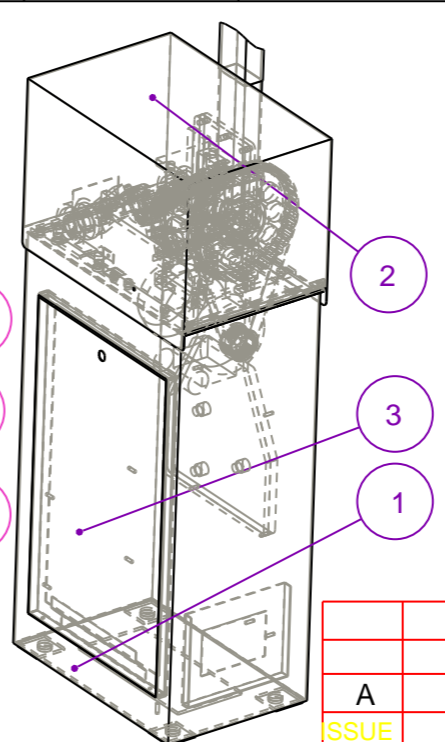
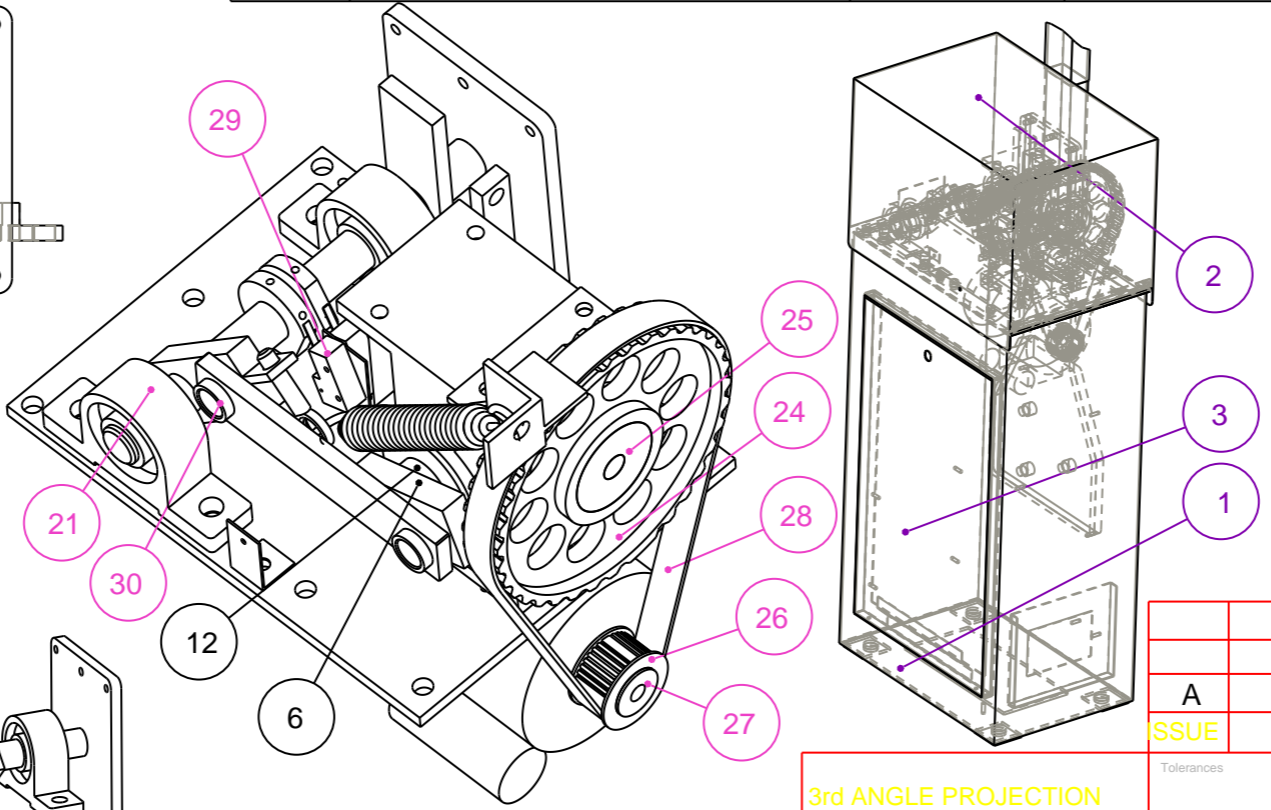
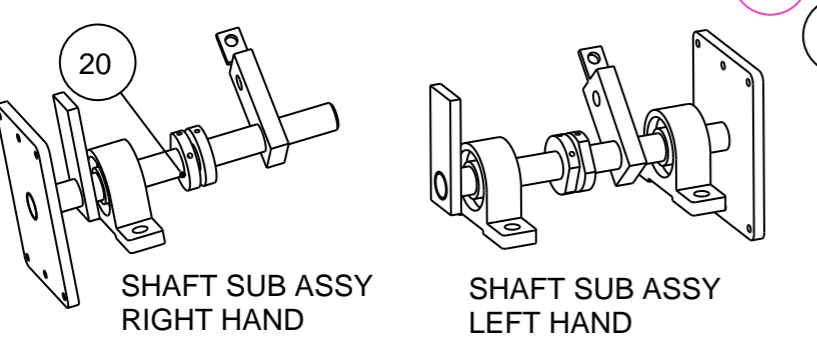
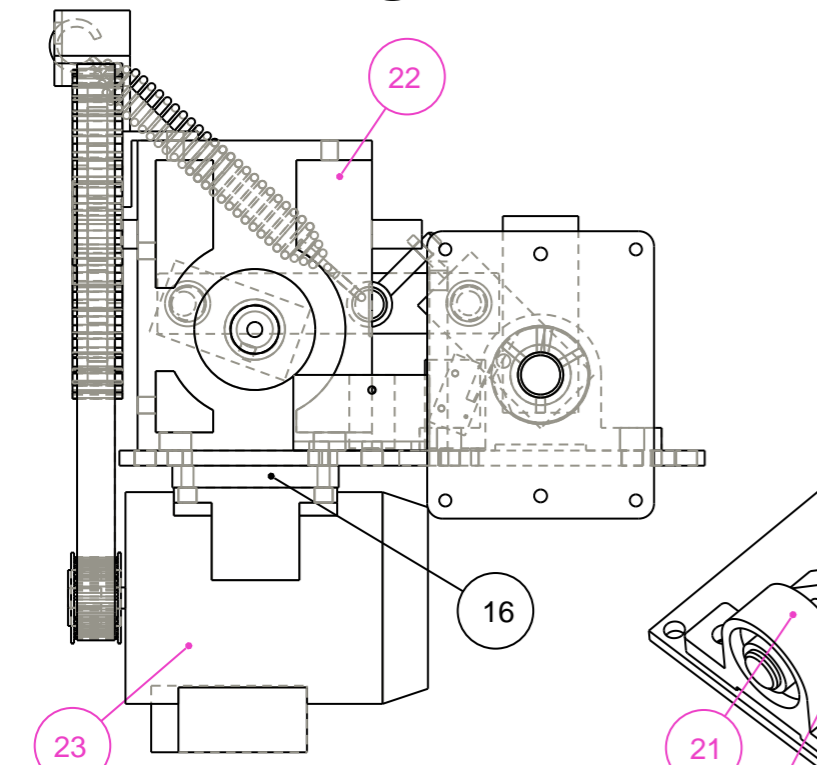
Drawing Title
AVON EB750 PARKING BARRIER, WITH END STEADY FOUNDATION DETAIL GENERAL ARRANGEMENT.

ISSUE	REVISION	SIG.	DATE
A	MOD TO 50/5/010	.	15/11/05

1st ANGLE PROJECTION		Used on		Date		Scale	
Material	Finish	Drawing No.	Traced	Checked	Approved	Sht.	of
COMPUTER GENERATED DO NOT ALTER BY HAND	.	EB750-6-02	.	.	M.J.	1	1
							A



ITEM	DESCRIPTION	DRAWING
4	MAIN SHAFT	EB47S-0-01
5	MAIN SHAFT LINK ARM	EB47S-0-02
6	GEARBOX LINK ARM	EB47S-0-03
7	MAIN SHAFT STOP ARM	EB47S-0-04
8	SPRING ANCHOR BOLT	EB47S-0-05
9	GEARBOX SHAFT	EB47S-0-06
10	LIMIT SWITCH PLATE	EB47S-0-07
11	LIMIT SWITCH CAM	EB47S-0-23
12	GEARBOX SHAFT SPACER	EB47S-1-27
13	MOTOR BASE PLATE	EB750-1-02
14	GBOX.SPRING ANCHOR	EB750-1-03
15	BELT DRIVE LINK ARM	EB750-1-04
16	MOTOR PACKER	EB750-1-05
17	SPRING BUFFER BRKT.	EB47S-1-12
18	SIDE ARM	01-1-012
19	STAY WIRE BRACKET	EB47S-1-08
20	MAIN SHAFT SUB ASSY	EB47S-8-09



ITEM	DESCRIPTION	DRAWING
1	CABINET	EB47S-1-16
2	LID	EB47S-1-14
3	DOOR	EB47S-1-15

ITEM	DESCRIPTION	DRAWING
21	PILLOW BLOCK	
22	GEARBOX	
23	MOTOR	
24	TIMEX PULLEY, LARGE	
25	TAPERED CENTRE, LARGE	
26	TIMEX PULLEY SMALL	
27	TAPERED CENTRE SMALL	
28	PULLEY BELT	
29	LIMIT SWITCH	
30	OILITE BUSH	
	SPRING BUFFER	

NOTES:
WELD PRACTICES TO BE
IN ACCORDANCE WITH
QMS 7.5.2/7.5.3



Avon Barrier Company Ltd.
Nova House
195 South Liberty Lane
Ashton Vale Trading Estate
Bristol BS3 2UU
Tel: (44) (0117) 953 5252
Fax: (44) (0117) 953 5373
E-mail: MECHANICAL @AVON-BARRIER.CO.UK

Drawing Title				
EB750 ASSEMBLY				
Drawn	Traced	Checked	Approved	Date
M.J		...		6/08
Drawing No. EB750_100				
Scale	Sht.	of	Rev.	
NTS	1	1	A	

A	NEW	M.J	5/6/08
ISSUE	REVISION	SIG.	DATE

3rd ANGLE PROJECTION

IF IN DOUBT ASK

COMPUTER GENERATED
DO NOT ALTER BY HAND