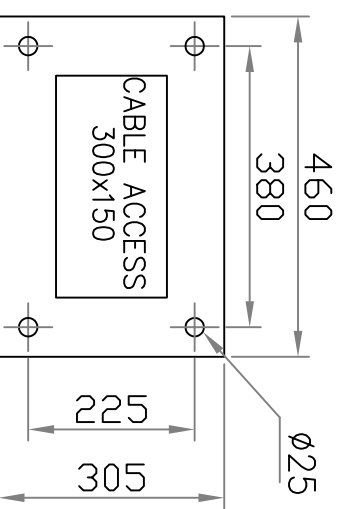
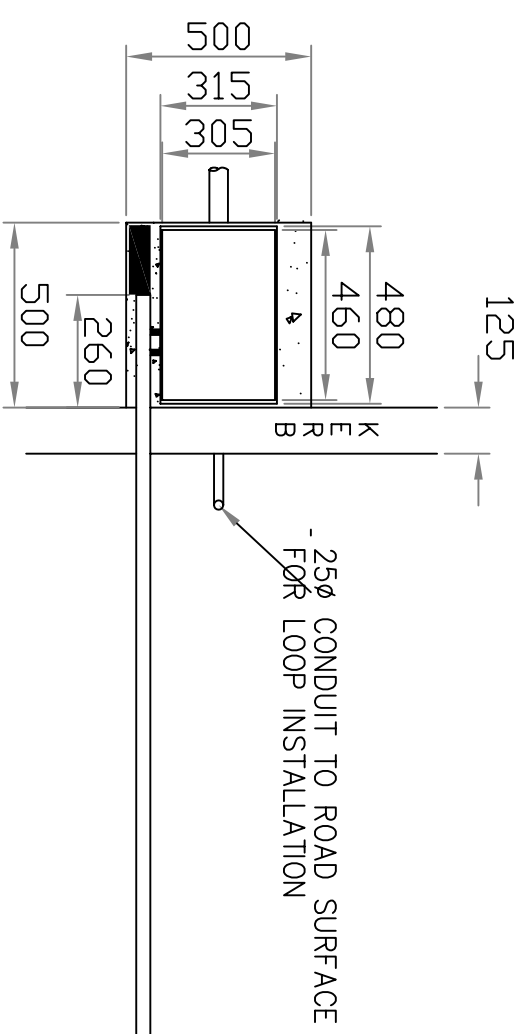
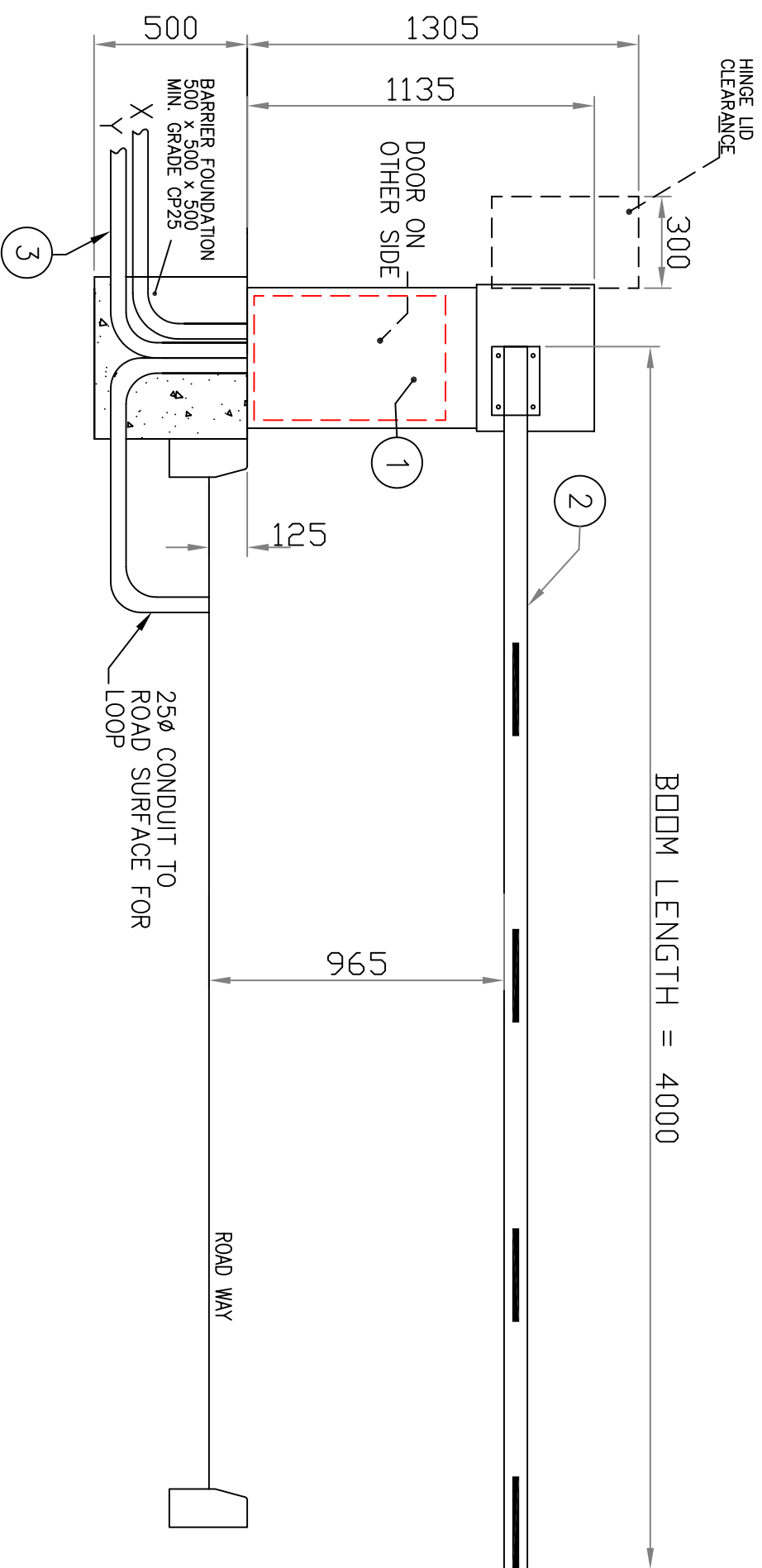



COUNTERWEIGHTS TO SUIT CUSTOMER REQUIREMENTS: I.E. LIGHT(S), SKIRT, STOP SIGNS, POGO.



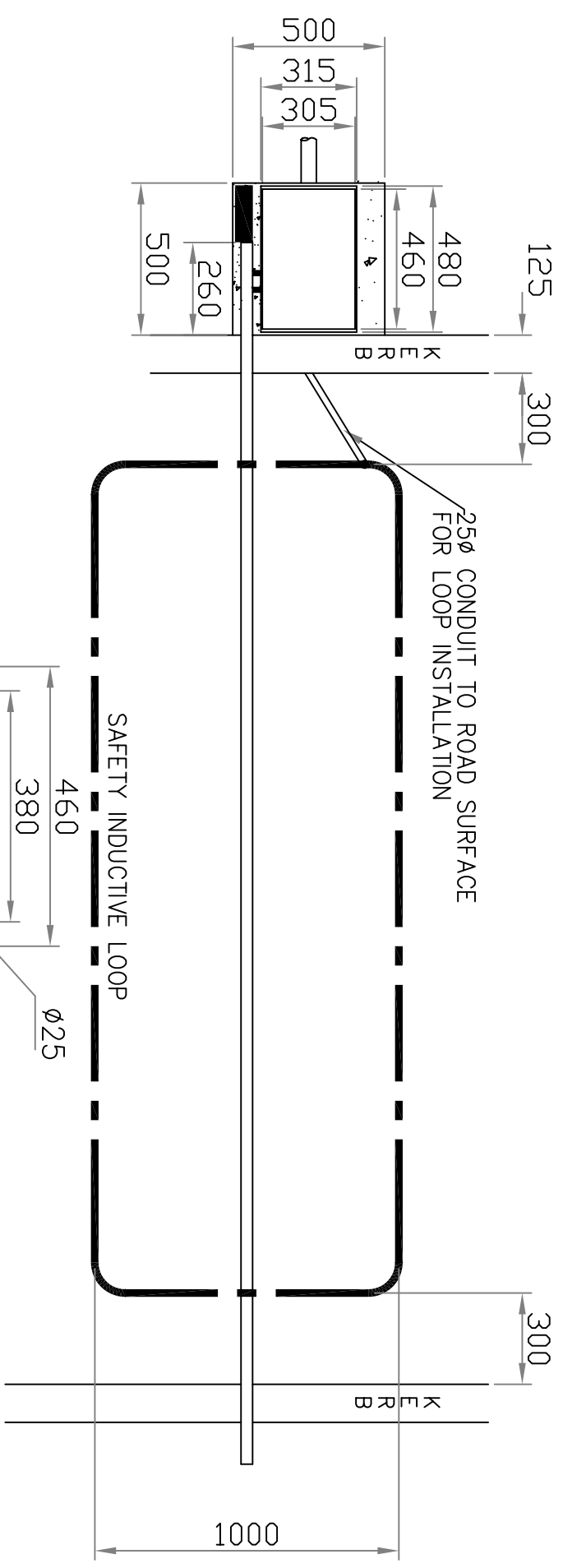
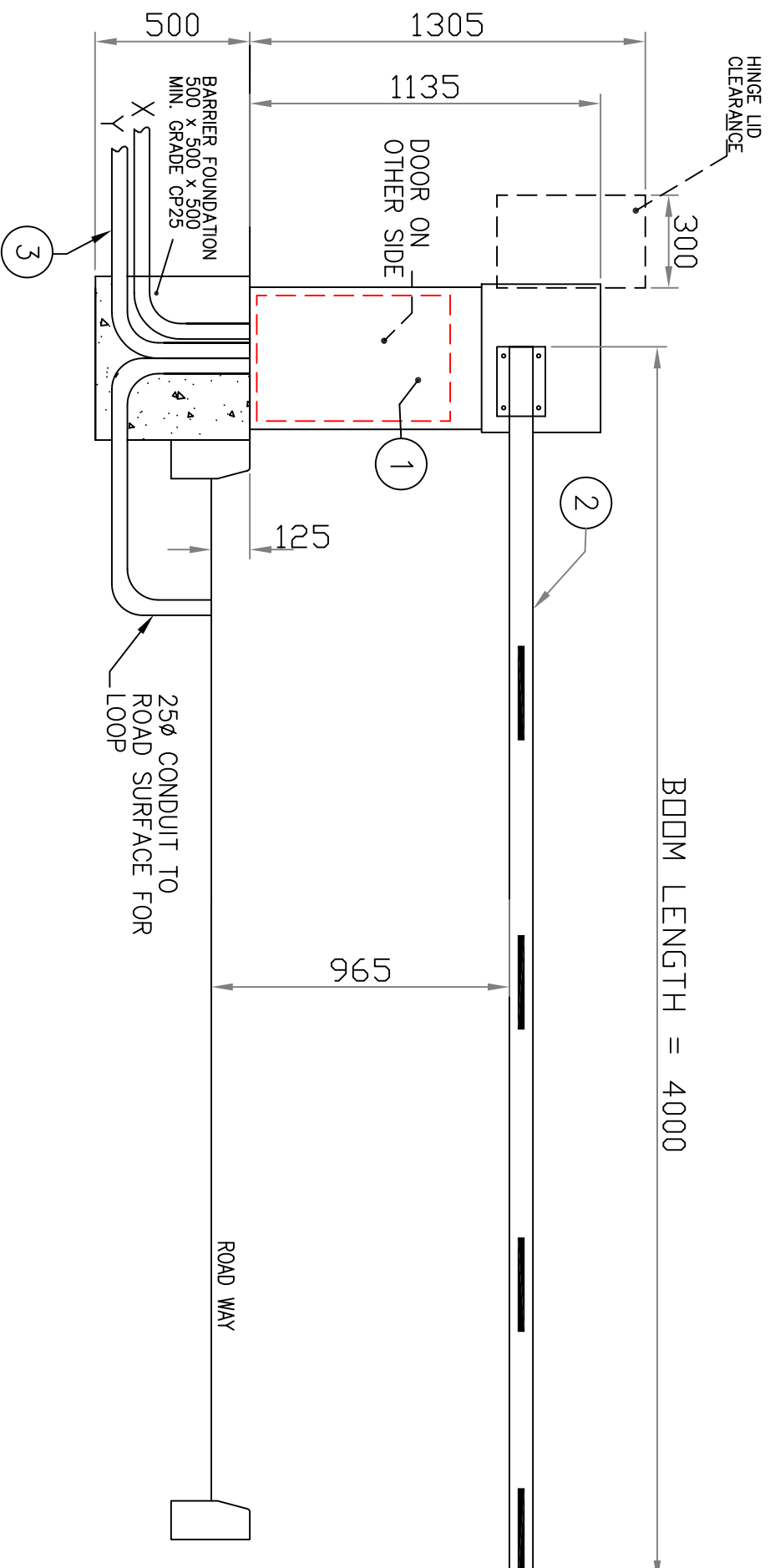

**LEGEND:**

- ELECTRO-MECHANICAL BARRIER EB450 PARKING MOTOR 0.375KW 230V 50HZ DIRECT DRIVE VIA GEARBOX, CONTROL VOLTAGE 24V DC. WINDING HANDLE FACILITY IN THE EVENT OF A POWER FAILURE. HINGED TOP LID (OPTIONALLY REMOVABLE). LOCKABLE SIDE COVER. 4xM12x160 CHEMICAL ANCHORS.
- BOOM-RECTANGULAR SHAPED ALUM. 76x38mm, POWDER COATED WHITE, RED REFLECTIVE STRIPES 60x350mm AT 750mm CENTRES WITH REINFORCEMENT AT FIXING POINT.
- ALL DUCTING TO BE 50ø MIN. UNLESS OTHERWISE SPECIFIED. CABLE DETAILS X DENOTES MAINS SUPPLY 230V 1PH 6AMP. 3x2.5mm<sup>2</sup> Y DENOTES CONTROL CABLE PUSH BUTTONS 6x1.5mm<sup>2</sup> SUBJECT TO SITE CONDITIONS.

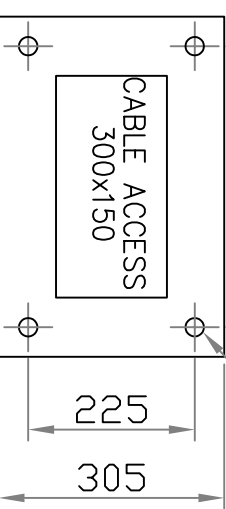
ISSUE	REVISION	SIG.	DATE
A	MOD TO 50/5/010	.	15/11/05

		<b>Avon Barrier Company Ltd.</b> Nova House 195 South Liberty Lane Ashton Vale Trading Estate Bristol BS3 2UJ Tel: (44) (0)117 953 5252 Fax: (44) (0)117 953 5373 E-mail: TECHNICAL@AVON-BARRIER.CO.UK	
<b>Drawing Title</b> AVON EB 450 PARKING BARRIER, FOUNDATION DETAIL (NO C/W NO END STEADY ) GENERAL ARRANGEMENT.			
Drawn M.J.	Traced .	Checked .	Approved .
Drawing No. EB450-6-01	Sht. 1	of 1	Date 11/05 NTS Scale A

COUNTERWEIGHTS TO SUIT CUSTOMER REQUIREMENTS: I.E. LIGHT(S), SKIRT, STOP SIGNS, POGO.

Avon Barrier Company Ltd.  
 Nova House  
 195 South Liberty Lane  
 Ashton Vale Trading Estate  
 Bristol BS3 2UJ  
 Tel: (44) (0)117 953 5252  
 Fax: (44) (0)117 953 5373  
 E-mail: TECHNICAL@AVON-BARRIER.CO.UK



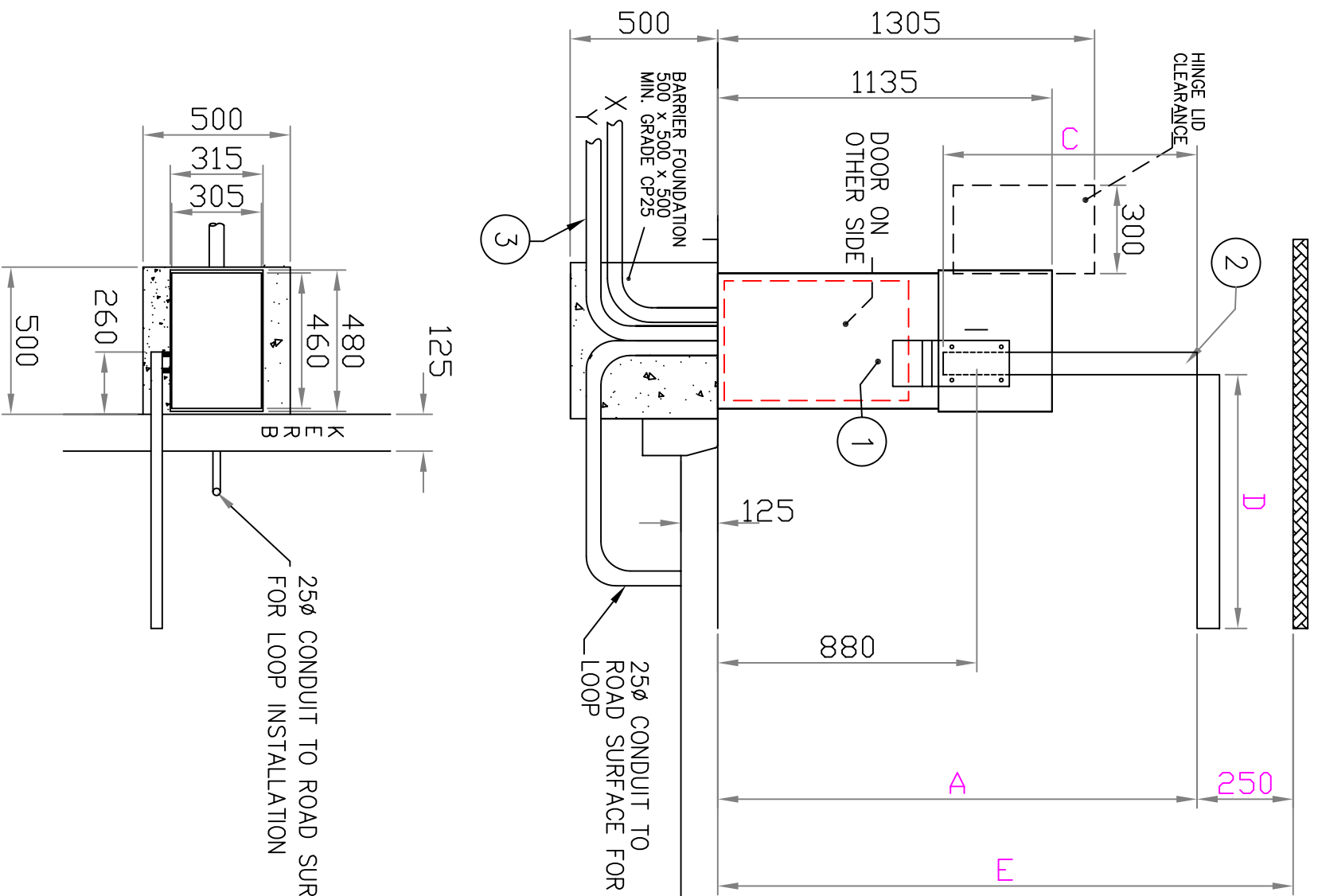
ISSUE	REVISION	SIG.	DATE
A	MOD TO EB450-6-02	.	20/11/08

1st ANGLE PROJECTION		Used on		Date		Scale	
Material	Finish	Drawn	Traced	Checked	Approved	Date	Scale
COMPUTER GENERATED DO NOT ALTER BY HAND	.	M.J	.	.	.	11/08	NTS
		Drawing No.		Sht.	of	Rev.	
		EB450-6-03		1	1	A	

- LEGEND:**
- ELECTRO-MECHANICAL BARRIER EB450 PARKING MOTOR 0.375KW 230V 50HZ DIRECT DRIVE VIA GEARBOX, CONTROL VOLTAGE 24V DC. WINDING HANDLE FACILITY IN THE EVENT OF A POWER FAILURE. HINGED TOP LID (OPTIONALLY REMOVABLE). LOCKABLE SIDE COVER. 4xM12x160 CHEMICAL ANCHORS.
  - BOOM-RECTANGULAR SHAPED ALUM. 76x38mm, POWDER COATED WHITE, RED REFLECTIVE STRIPES 60x350mm AT 750mm CENTRES WITH REINFORCEMENT AT FIXING POINT.

- ALL DUCTING TO BE 50ø MIN. UNLESS OTHERWISE SPECIFIED.  
 CABLE DETAILS  
 X DENOTES MAINS SUPPLY 230V 1PH 6AMP. 3x2.5mm<sup>2</sup>  
 Y DENOTES CONTROL CABLE PUSH BUTTONS 6x1.5mm<sup>2</sup> SUBJECT TO SITE CONDITIONS.

Drawing Title  
**AVON EB 450 PARKING BARRIER, FOUNDATION DETAIL (NO C/W NO END STEADY ) GENERAL ARRANGEMENT.**



MAX. BOOM LENGTH 3M.

A = ROOF HEIGHT E – 250

C = LOWER BOOM SECTION = A – 760mm

D = UPPER BOOM SECTION = TOTAL BOOM LENGTH – C

E = ROOF HEIGHT

F = PIVOT TO PIVOT = C – 120mm

CUT LENGTH OF CRANKED ARM TUBE = PIVOT TO PIVOT F – 200mm

N.B. DIMENSION C ADD 30mm AFTER CALCULATIONS FOR END CAP ALLOWANCE.

**LEGEND:**

1. ELECTRO-MECHANICAL BARRIER EB450 PARKING MOTOR 0.375KW 230V 50HZ DIRECT DRIVE VIA GEARBOX, CONTROL VOLTAGE 24V DC. WINDING HANDLE FACILITY IN THE EVENT OF A POWER FAILURE. HINGED TOP LID (OPTIONALLY REMOVABLE). LOCKABLE SIDE COVER. 4xM12x160 CHEMICAL ANCHORS.

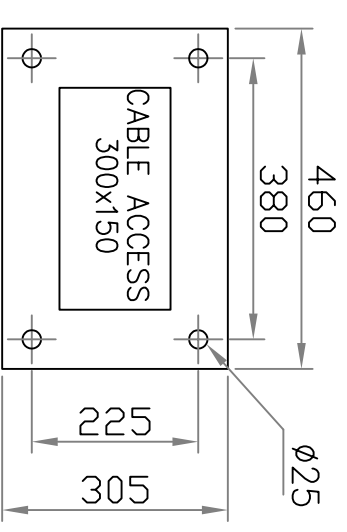
2. BOOM-RECTANGULAR SHAPED ALUM. 76x38mm, POWDER COATED WHITE, RED REFLECTIVE STRIPES 60x350mm AT 750mm CENTRES WITH REINFORCEMENT AT FIXING POINT.

3. ALL DUCTING TO BE 50Ø MIN. UNLESS OTHERWISE SPECIFIED.

**CABLE DETAILS**

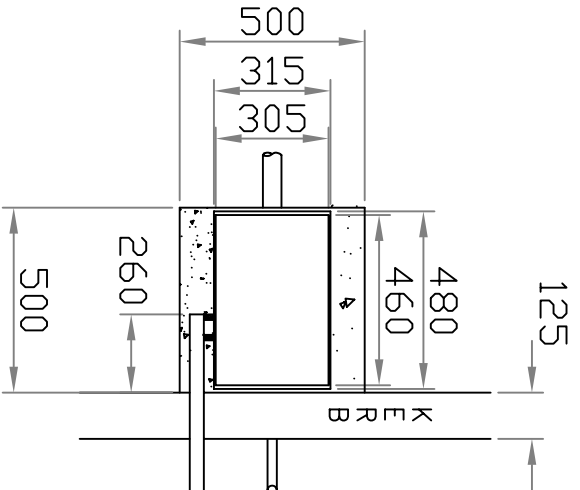
X DENOTES MAINS SUPPLY 230V 1PH 6AMP. 3x2.5mm<sup>2</sup>

Y DENOTES CONTROL CABLE PUSH BUTTONS 6x1.5mm<sup>2</sup> SUBJECT TO SITE CONDITIONS.



25Ø CONDUIT TO ROAD SURFACE FOR LOOP INSTALLATION

25Ø CONDUIT TO ROAD SURFACE FOR LOOP



ISSUE	REVISION	SIG.	DATE	Used on	Tolerances
B	E REDEFINED	M.J	14/9/09		
A	MOD TO EB450-6-01		12/2/09		

1st ANGLE PROJECTION	Material	Finish
COMPUTER GENERATED DO NOT ALTER BY HAND	.	.

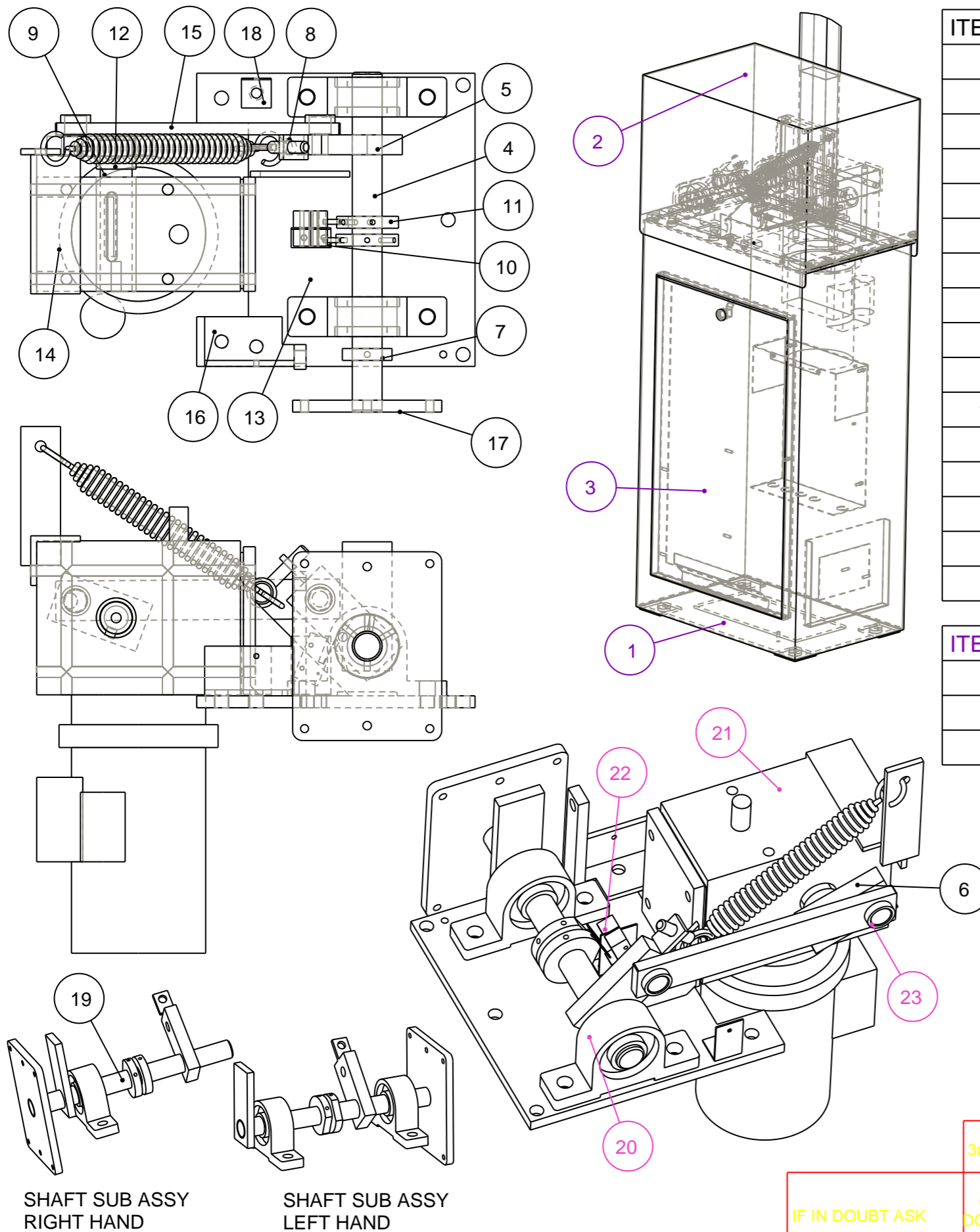
  

Drawing Title	Drawn	Traced	Checked	Approved	Date	Scale
AVON EB 450 PARKING BARRIER, FOUNDATION DETAIL ARTICULATED ARM GENERAL ARRANGEMENT.	M.J	.	.	.	2/09	NTS

Drawing No.	Sht.	of	Rev.
EB450-6-04	1	1	B

Avon Barrier Company Ltd.  
Nova House  
195 South Liberty Lane  
Ashton Vale Trading Estate  
Bristol BS3 2UU  
Tel: (44) (0117) 953 5252  
Fax: (44) (0117) 953 5373  
E-mail: TECHNICAL@AVON-BARRIER.CO.UK



ITEM	DESCRIPTION	DRAWING
4	MAIN SHAFT	EB47S-0-01
5	MAIN SHAFT LINK ARM	EB47S-0-02
6	GEARBOX LINK ARM	EB47S-0-03
7	MAIN SHAFT STOP ARM	EB47S-0-04
8	SPRING ANCHOR BOLT	EB47S-0-05
9	GEARBOX SHAFT	EB47S-0-06
10	LIMIT SWITCH PLATE	EB47S-0-07
11	LIMIT SWITCH CAM	EB47S-0-23
12	GEARBOX SHAFT SPACER	EB47S-1-27
13	MOTOR BASE PLATE	EB450-1-01
14	SPRING ANCHOR	EB450-1-02
15	BELT DRIVE LINK ARM	EB450-1-03
16	SPRING BUFFER BRKT.	EB47S-1-12
17	SIDE ARM	01-1-012
18	STAY WIRE BRACKET	EB47S-1-08
19	MAIN SHAFT SUB ASSY.	EB47S-8-09

ITEM	DESCRIPTION	DRAWING
1	CABINET	EB47S-1-16
2	LID	EB47S-1-14
3	DOOR	EB47S-1-15

ITEM	DESCRIPTION
20	PILLOW BLOCK
21	MOTOR / GEARBOX
22	LIMIT SWITCH
23	OILITE BUSH
	SPRING BUFFER

NOTES:  
WELD PRACTICES TO BE  
IN ACCORDANCE WITH  
QMS 7.5.2/7.5.3



Avon Barrier Company Ltd.  
Nova House  
195 South Liberty Lane  
Ashton Vale Trading Estate  
Bristol BS3 2UU  
Tel: (44) (0117) 953 5252  
Fax: (44) (0117) 953 5373  
E-mail: MECHANICAL @AVON-BARRIER.CO.UK

Drawing Title

EB450  
ASSEMBLY

B	21 WAS MOTOR	T.S.	10/7/09	Drawn	Traced	Checked	Approved	Date
A	NEW	M.J	5/6/08	M.J		...		6/08
ISSUE	REVISION	SIG.	DATE					

3rd ANGLE PROJECTION	Tolerances	Used on	Drawing No.	EB450_100			
IF IN DOUBT ASK	Material	Finish	Scale	NTS	Sht.	of	Rev.
COMPUTER GENERATED DO NOT ALTER BY HAND					1	1	B

SHAFT SUB ASSY  
RIGHT HAND

SHAFT SUB ASSY  
LEFT HAND